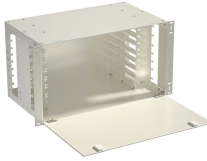


# **Cable tray fabrication practice materials**



## Cable tray fabrication practice materials



Cable Tray Technical Guide A practical guide to product selection and installation This guide for engineers and installers has been developed by ABB as a practical reference regarding cable tray ...



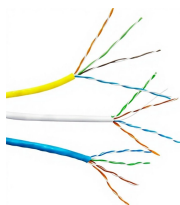
Excluding conductors, the cost of the cable trays, supports, and miscellaneous materials will provide a savings of up to 80% as compared to the cost of the conduits, supports, pull boxes, and ...



When fitting cable trays and their accessories, the products are cut on site to create changes of direction, adjust sections, etc. Damage can also occur during handling; as a result, both the ...



Our wire basket systems utilize 100% recycled steel content in the manufacturing of our tray, and are packaged in kraft unbleached packaging. Packaging and strapping materials are recyclable.



Don't worry; this guide covers everything you need to know about the manufacturing process, types of cable trays, and why they are important for any electrical installation.



Fabricated in numerous styles (wiremesh, ladder, ventilated trough, channel, and solid-bottom) and sizes, cable tray provides the greatest versatility among cable support systems, while offering ...



This guide will discuss the process of cable tray fabrication and installation, and further highlight the considerations of using a GI cable tray for various applications.



The purpose of this article is to define the sequence and methodology for the installation of electrical cable trays, cable trunking, cable raceways and boxes, junction and pull boxes.



The document outlines procedures for cable tray fabrication and installation for the HA MBD project. It includes sections on scope of work, reference documents, required materials and equipment, safety ...



This article explains the main requirements and good practices for cable tray systems, including tray types, materials, loading, supports, bonding, cable selection, and installation details.



Aluminum, steel, stainless steel and fiberglass are all readily available materials for cable tray manufacturing. These materials perform very well at ambient temperatures (0°F to 100°F).

## Contact Us

For more information, pricing, or custom network solutions, please contact us:

Website: <https://www.hashherbcafe.co.za>

Email: [hello@hashherbcafe.co.za](mailto:hello@hashherbcafe.co.za)

Phone: +27 63 814 7295

Address: 15 Galaxy Road, Linbro Business Park, Johannesburg, 2065, South Africa

This document is for informational purposes only. Specifications subject to change without notice.

