

Cable tray electromagnetic interference protection



Cable tray electromagnetic interference protection



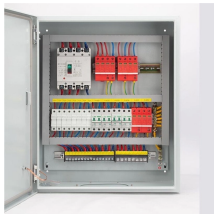
Learn how to select the best cable trays for shielding electromagnetic interference (EMI) to ensure optimal EMI protection for your cable systems.



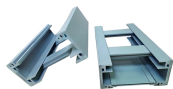
Unshielded tray cables are an economical solution where electrical interference is not a concern. Shielded tray cables provide some added durability and EMI protection, making them ideal for high ...



Whenever possible, power cables and data cables should be run in separate trays to prevent electromagnetic interference. When this is not possible, dividers should be installed to provide an ...



Husky EMI Cable Tray is used to protect sensitive cables, such as instrumentation cables, from electromagnetic interference.



Using metallic cable trays can reduce the effects of coupling and improve EMC performance of devices. Wire mesh cable trays have EMC performance as good as perforated channel cable trays.



This blog explores the techniques, materials, and best practices used to shield cable assemblies from electromagnetic interference in environments ranging from aerospace and military to industrial and ...



Electromagnetic interference is caused by the mutual inductance between the control signal cables and other surrounding power cables and machinery. This mutual inductance can be reduced (shielding ...



Chalfant began supplying industry cable tray in 1948 and designed and developed the first RF Tray for NASA in 1960 when it became imperative to protect instrument and control cabling from EMI fields ...



Unshielded tray cables are an economical solution where electrical interference is not a concern. Shielded tray cables provide some added durability and EMI ...



Cable trays are an ideal option in settings where you need to protect your wires from electromagnetic (EM) or radio-frequency interference to ensure better performance and smooth ...



With a fully enclosed base, these trays prevent dust, dirt, moisture, and electromagnetic interference from affecting cable performance, making them an ideal choice for sensitive and critical installations.

Contact Us

For more information, pricing, or custom network solutions, please contact us:

Website: <https://www.hashherbcafe.co.za>

Email: hello@hashherbcafe.co.za

Phone: +27 63 814 7295

Address: 15 Galaxy Road, Linbro Business Park, Johannesburg, 2065, South Africa

This document is for informational purposes only. Specifications subject to change without notice.

