

## Cable tray deformation joint



## Cable tray deformation joint



In this study, based on the cyclic loading test, a hysteretic model is proposed for MSBJ, which can reflect the damage mechanism accurately.



This guide examines five of the most frequently observed cable tray installation defects, provides code-compliant prevention measures, and offers ...



NEMA has a free PDF installation guide that gives you the information needed to calculate how many expansion joints are needed. The code never tells you that you need one every so many ...



Learn how to prevent cable tray deformation during installation. Discover practical measures to ensure proper installation, enhance cable tray stability, and prevent damage.



For a 100° F differential (winter to summer), a steel cable tray will require an expansion joint every 128 feet and an aluminum cable tray every 65 feet. The temperature at the time of installation will dictate ...



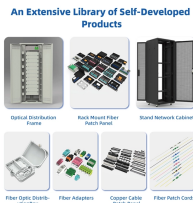
Thermal expansion and contraction of cable trays must be accounted for through the use of expansion joints. Proper installation of expansion joints is important to prevent tearing, bending, or damage ...



This guide examines five of the most frequently observed cable tray installation defects, provides code-compliant prevention measures, and offers practical checkpoints for quality control.



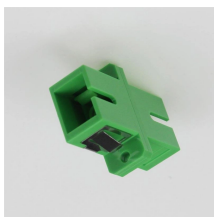
Learn how to manage thermal expansion and contraction in cable tray systems with expert tips on expansion joints, guides, and spacing to ensure long-term structural integrity.



In accordance with its continuous improvement policy, Legrand reserves the right to change the specifications and illustrations without notice. All illustrations, descriptions and technical information ...



Structural Deformation: thermal stresses may cause buckling, warping or bowing of the cable tray system, especially at the mid-point between supports, if not adequately designed and installed to ...



While very important in that instance as even slight deflection could cause misalignment in the operating mechanism and result in binding and difficult switch operation, the application of this specification to ...



However, like any other infrastructure, cable trays are prone to failures that can result in serious safety hazards, financial losses, and downtime. In this article, we will discuss the two basic ...

## Contact Us

For more information, pricing, or custom network solutions, please contact us:

Website: <https://www.hashherbcafe.co.za>

Email: [hello@hashherbcafe.co.za](mailto:hello@hashherbcafe.co.za)

Phone: +27 63 814 7295

Address: 15 Galaxy Road, Linbro Business Park, Johannesburg, 2065, South Africa

This document is for informational purposes only. Specifications subject to change without notice.

