

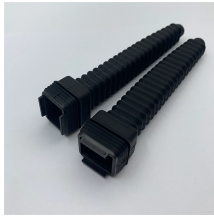
Cable tray cover use the cable tray as a cover plate



Cable tray cover use the cable tray as a cover plate



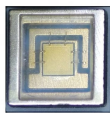
Used to fully enclose 12x4 channel in conjunction with the Spill-Over Junction FRSPJ2X2BL. Cover snaps onto the channel base. Hinged feature allows easy access to add or remove cables.



That is, it covers the top section of the cable tray. In this guide, you will learn about the different types of cable covers and how to choose a perfect option.



Protects cables from damage, contamination and moisture from above. Suitable for industrial areas such as mechanical engineering. When using covers outdoors, additional measures against the influence ...



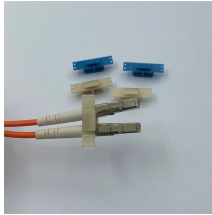
Cover, Cable Tray; Tray Type: Straight; Width: 6 in.; Length: 10 ft.; Construction Style: Solid Flanged; Material: Aluminum.



A complete guide to cable tray cover types: Compare 9+ designs, material specifications (NEMA/IEC), selection factors & maintenance best practices.



Cover RDRS in various widths, material thickness 3.25 mm, anti-slip, cover overlying Cover RDS in various widths, material thickness 2 mm, cover overlying Cover RDVSRSL in various widths, material ...



Atkore's US Tray was established in 2012, as an American manufacturer of made-to-order cable trays that are built per NEMA standards and certified by UL. We offer modern, innovative, and technically ...



Cable Tray Cover Fabrication While many cable trays remain uncovered, those that run under or along the floor require a strong and sturdy cable tray cover for continuous employee safety. What are Tray ...



Explore cable tray cover types, materials & standards to optimize safety and system ROI. Read more in our expert guide.



MP Husky offers a wide variety of cable tray covers to provide protection for the cables contained within the system from sunlight, environmental elements, dirt, debris, and falling objects. All of the covers ...

Contact Us

For more information, pricing, or custom network solutions, please contact us:

Website: <https://www.hashherbcafe.co.za>

Email: hello@hashherbcafe.co.za

Phone: +27 63 814 7295

Address: 15 Galaxy Road, Linbro Business Park, Johannesburg, 2065, South Africa

This document is for informational purposes only. Specifications subject to change without notice.

