

Cable tray cover plate closed magnetic circuit



Cable tray cover plate closed magnetic circuit



MP Husky offers a wide variety of cable tray covers to provide protection for the cables contained within the system from sunlight, environmental elements, dirt, debris, and falling objects. All of the covers ...



Each outdoor cable tray with cover offers effective shielding against rain and UV exposure while maintaining proper cable ventilation. The covers are compatible ...



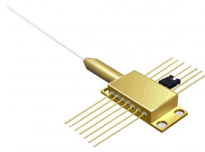
NEC Article 392 explains cable trays, their components, appropriate wiring methods for cable trays, and instances where they are and are not permitted for use. It also focuses on ...



Cable tray types, fill rules for single-conductor and multiconductor cables, ampacity derating, separation requirements, and when to use tray vs conduit.



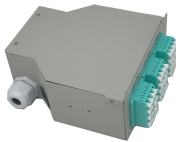
In this article, we will explore the best types of cable trays for shielding electromagnetic interference, providing in-depth guidance on how to select the right tray type to maintain the stability ...



It's often used as an alternative to cable ties to guide and organize short runs of electrical wiring in enclosures, control panels, and machines. The cover snaps on and is removable.



From heavy power cable pathways on oil drilling platforms to data center cabling, explore the cable tray that's strong yet easy to install. Fast installation with dependable support.



Used to fully enclose 12x4 channel in conjunction with the Spill-Over Junction FRSPJ2X2BL. Cover snaps onto the channel base. Hinged feature allows easy access to add or remove cables.



Gland connectors made of aluminum should not really be a problem in this case. The slots between the holes are for blocking induced magnetic flux from circulating around an individual ...



To meet the requirements of this specification the cable tray and cover must totally enclose the specified cables, circuits, and/or devices with metal. Non-metallic materials are not acceptable for this purpose.



Our wind certification report provides you with list of acceptable B-Line series cable tray supports, fittings and covers based off of the environmental conditions, cable loading, and type of cable tray in your ...



Cable tray length is selected based on the load to be supported, the distance between the supports (also referred to as the span), and handling and installation constraints.

Contact Us

For more information, pricing, or custom network solutions, please contact us:

Website: <https://www.hashherbcafe.co.za>

Email: hello@hashherbcafe.co.za

Phone: +27 63 814 7295

Address: 15 Galaxy Road, Linbro Business Park, Johannesburg, 2065, South Africa

This document is for informational purposes only. Specifications subject to change without notice.

