

Cable tray cover lights

Motor protection controller



Cable tray cover lights



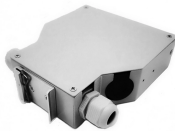
Our cable tray cover clamps are meticulously designed to provide a secure and reliable solution. Manufactured from durable materials, these clamps ensure that cable tray covers remain in place, ...



These wire mesh cable trays suspend cables and ensure that your important wires and cables are safely organized and out of your way. The design of these cable ...



A complete guide to cable tray cover types: Compare 9+ designs, material specifications (NEMA/IEC), selection factors & maintenance best practices.



Conduit, Raceway & Struts Cable Trays, Fittings & Struts Cable Trays & Accessories Cable Tray Covers



These wire mesh cable trays suspend cables and ensure that your important wires and cables are safely organized and out of your way. The design of these cable baskets allows for floor-based, ceiling ...



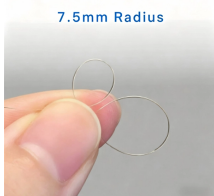
These are the most corrosion-resistant tray systems we offer for routing cable and hose in configurations such as curves, slopes, and tees. Cut, bend, and connect the wire mesh trays.



Ventilated Cable Tray Cover, 12in Wide, 3.3ft Long, Cabo CVN 300PG. 1 pkg = (3) 3.3ft Covers for (1) 10ft Tray



Choose from our selection of cable trays, including over 850 products in a wide range of styles and sizes. Same and Next Day Delivery.



Types of Cable Tray Lighting Cable tray lighting is an essential component in industrial, commercial, and institutional facilities, providing targeted illumination along cable management systems. These ...



B-Line 807A-24-144 Flange Straight Section Cable Tray Cover, 24 in W Tray, Aluminum, Flange Top SKU 460185 MFGR # 807A-24-144 \$894.68 /ea



MP Husky offers a wide variety of cable tray covers to provide protection for the cables contained within the system from sunlight, environmental elements, dirt, debris, and falling objects. All of the covers ...

Contact Us

For more information, pricing, or custom network solutions, please contact us:

Website: <https://www.hashherbcafe.co.za>

Email: hello@hashherbcafe.co.za

Phone: +27 63 814 7295

Address: 15 Galaxy Road, Linbro Business Park, Johannesburg, 2065, South Africa

This document is for informational purposes only. Specifications subject to change without notice.

