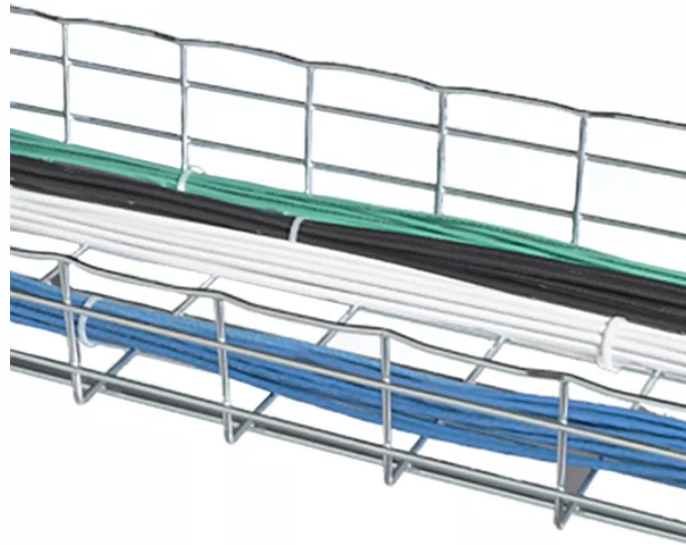


# Cable tray corrosion exposes bare cables



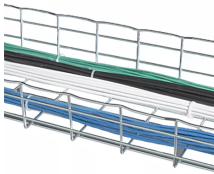
## Overview

Cable tray with insulation structure can protect the cables from rain, snow, UV rays and other corrosion from outsides. Cable trays are widely used in industries to manage and protect electrical cables. However, exposure to harsh environments can lead to corrosion, compromising their structural integrity and safety. Corrosive environments, characterized by the presence of acids, salts, or extreme humidity, can lead to rapid degradation. Corrosion is a common concern in cable tray systems, particularly in industrial environments where exposure to harsh conditions like moisture, chemicals, and temperature fluctuations is prevalent. Addressing cable tray corrosion is crucial to ensure the longevity and performance of the system while. Legrand wiremesh cable trays are resistant to corrosion thanks to the various available surface treatments. There is a solution for each type of environment. Below, we delve into their key.

## Cable tray corrosion exposes bare cables



This comprehensive guide investigates the most frequent wire management challenges faced in real-world setups and demonstrates how the correct cable tray accessories may address ...



Corrosion: Corrosion is the most common cause of mechanical failure in cable trays. It occurs when the protective coating of the tray gets damaged or wears off, exposing the metal to ...



Cable tray installed in a hazardous location must contain only those cables that are appropriate for this type of environment as defined in Chapter 5 of the NEC.



When I see specific localised rusting like this, it screams "galvanic corrosion" to me. This occurs when two metals of significant difference on the anodic index are used together in the ...



A bare copper equipment grounding conductor should not be placed in an aluminum cable tray due to the potential for electrolytic corrosion of the aluminum cable tray in a moist environment.



Based on its own advantages, Cable tray supplier connect cables to buildings that can be supported and fixed, or to independent supporting cables. It can play a good role as the skeleton of ...



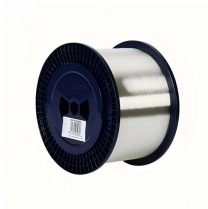
Discover the best practices for cable tray corrosion protection, including load capacity, materials, and customized solutions for various applications.



This comprehensive guide explores the best materials for cable trays in corrosive environments, analyzing options like HDG steel, stainless steel, aluminum alloy, and FRP.



Legrand wiremesh cable trays are resistant to corrosion thanks to the various available surface treatments. There is a solution for each type of environment.



Addressing cable tray corrosion is crucial to ensure the longevity and performance of the system while maintaining safety standards. Here are some effective strategies to combat cable...



Discover the essentials of corrosion-resistant cable trays, including load capacity, customization options, and industry applications.



Learn how to choose the best anti-corrosive cable trays for your electrical system. Discover the ideal materials for mild, moderate, and severe ...

## Contact Us

For more information, pricing, or custom network solutions, please contact us:

Website: <https://www.hashherbcafe.co.za>

Email: [hello@hashherbcafe.co.za](mailto:hello@hashherbcafe.co.za)

Phone: +27 63 814 7295

Address: 15 Galaxy Road, Linbro Business Park, Johannesburg, 2065, South Africa

This document is for informational purposes only. Specifications subject to change without notice.

