

# Cable tray backplate support method



## Overview

Cable trays must be adequately supported to carry the weight of cables plus any additional loads (such as snow or ice for outdoor installations). Use supports (wall brackets, trapeze hangers, or pedestal supports) at intervals consistent with the tray load rating and manufacturer. When developing our cable support OBO can offer reliable solutions for systems, three attributes are at the routing and fastening cables securely core of what we do: efficiency, resil- for each of these installation challeng-ience and safety. es in the industrial environment. Our cable support. Cable tray (or cable ladder) systems are a popular alternative to electrical conduit systems, as they have an outstanding record for dependable service, design flexibility and cost savings in commercial and industrial applications. This guide covers the critical steps, from selecting the right electrical cable tray and performing accurate cable fill. us-trations without notice. All illustrations, descriptions and technical information included in this document are provided as indications and can cable trays are equivalent.

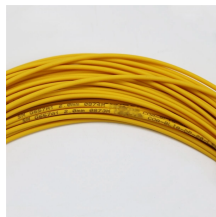
## Cable tray backplate support method



Our wind certification report provides you with list of acceptable B-Line series cable tray supports, fittings and covers based off of the environmental conditions, cable loading, and type of cable tray in your ...



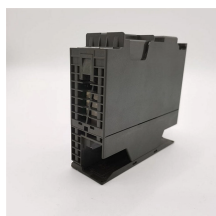
When fitting cable trays and their accessories, the products are cut on site to create changes of direction, adjust sections, etc. Damage can also occur during handling; as a result, both the ...



This guide covers the critical steps, from selecting the right electrical cable tray and performing accurate cable fill calculations to managing a safe cable pull through and ensuring all bonding and grounding ...



The load capacity of the cable trays according to the support width can be read off in the diagram using load curves - here, shown as an example for a cable tray with the tray widths 100 to 600 mm.



Cable trays must be adequately supported to carry the weight of cables plus any additional loads (such as snow or ice for outdoor installations). Use supports (wall brackets, trapeze ...



Discover efficient cable tray support structures for optimal cable management. Learn about hanger, wall-mounted, and Unistrut systems for safer installations.



This guide covers cable ladder systems, cable tray systems, channel support systems and associated supports intended for the support and accommodation of cables and possibly other electrical ...



Discover cable tray supports at TechLine Mfg. Choose from hangers, brackets, and clamps for your needs. Contact us today for custom or standard-sized brackets!



The use of basket tray is typical for light weight last meter cable runs in onshore applications. The use of ventilated cable tray is common for heavier weight cables and offers more protection in offshore ...



Hubbell's NEXTFRAME® Ladder Tray is the effective and widely used cable runway that supports and delivers bundles of cable between cabinets, racks, and closets, along walls, and suspended from ...

## Contact Us

For more information, pricing, or custom network solutions, please contact us:

Website: <https://www.hashherbcafe.co.za>

Email: [hello@hashherbcafe.co.za](mailto:hello@hashherbcafe.co.za)

Phone: +27 63 814 7295

Address: 15 Galaxy Road, Linbro Business Park, Johannesburg, 2065, South Africa

This document is for informational purposes only. Specifications subject to change without notice.

