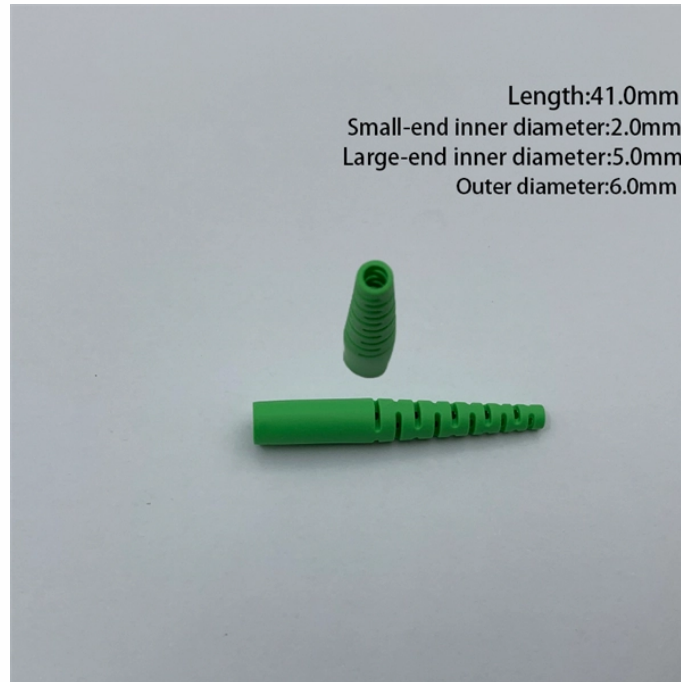


Cable tray S1



Cable tray S1



durable components of steel of highest quality, resistive to corrosion and with excellent chemi- All cable trays are made of round cal resistance. is gentle on cables, tubing, installers tenance personnel.



Used with copper patch panels or fiber enclosures, the cable tray rack can increase cabling density, improve cable routing, simplify moves, adds and changes and provide pre-cabled connectivity for ...



For example, the first selection issue is the environment to which the cable tray will be subjected. This selection will lead to the best material for your application.



They are mechanical and tool free, support external cable preparation and flexible fibre management. The Fibre Closure BPEO size 1 organiser can be equipped with up to 12 splice trays, if the closure is ...



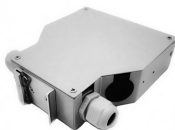
Finishes include steel and 316L stainless steel to meet the needs of any application. Rail heights range from 4" to 7". All splices are supplied in pairs. Geomet fasteners are standard on aluminum and steel ...



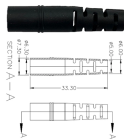
Hardware shall be zinc plated in accordance with ASTM B633 SC1 for pre-galvanized cable trays, or Chromium Zinc in accordance with ASTM F-1136-88 for hot dip galvanized cable trays.



The system is ideal for NEMA 12A and 12B (CSA class C-3 and D-3M) load classes for small power and instrumentation tray cable management in multiple applications.



Channel cable tray secures cables using Eagle Basket pre-punched holes. New pre-punched holes allow the secure attachment of cables to the inside of the channel without the need to drill holes, ...



NEMA VE 1-2017 Specifies requirements for metal cable trays and associated fittings designed for use in accordance with the rules of Canadian Electrical Code, Part I and the National Electrical Code®



The flexible coupler provides easy installation without measuring and cutting cable tray side rails. Once installed, the coupler allows for electrical continuity, therefore eliminating the requirement for a ...

Contact Us

For more information, pricing, or custom network solutions, please contact us:

Website: <https://www.hashherbcafe.co.za>

Email: hello@hashherbcafe.co.za

Phone: +27 63 814 7295

Address: 15 Galaxy Road, Linbro Business Park, Johannesburg, 2065, South Africa

This document is for informational purposes only. Specifications subject to change without notice.

