

Cable Tray Trip Handling Procedure



Cable Tray Trip Handling Procedure



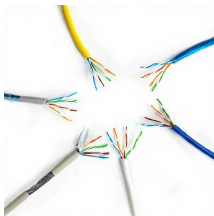
The document outlines procedures for handling, packaging, and preserving cable trays during transportation and storage. It details the proper methods for receiving, unloading, and shipping cable ...



QUESTIONS: Explain why cables should be cleared from passageways? Name 3 features of good cable management. What are some of the dangers of exposed cables?



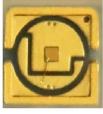
Cable tray length is selected based on the load to be supported, the distance between the supports (also referred to as the span), and handling and installation constraints.



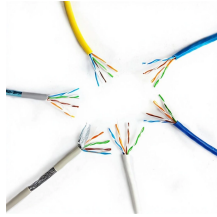
Never let drum flanges contact cable on adjacent drums. Heavy drums should be chained appropriately for transit, with protection from the chain rubbers for the spindle hole in the centre of the drum.



NEMA Standard VE 2-2006 addresses shipping, handling, storing, and installing cable tray systems; it also provides information on cable tray maintenance and system modification.



1.0 PURPOSE The purpose of this document is to define the procedure for the handling, storing, transportation of cables produced by Oman Cables Industry (OCI).



This article is about Storage, Handling and Preservation of Cable Tray and Accessories for commercial buildings, plants and refinery projects as per international codes and standards.



Handle and install cables within suitable temperature limits. Handle coils and reels utilizing equipment designed for that purpose. Do not drop coils or reels from any height, particularly from trucks or other ...



Cable Handling, Storage & Installation flex cable handling, storage and installation. Important considerations in any cable installation are ambient temperature, equipment used, conduit or tray fill, ...



Some of these criteria include the required load that the cable tray must support, the distance between the cable tray supports, and ease of handling and installation.

Contact Us

For more information, pricing, or custom network solutions, please contact us:

Website: <https://www.hashherbcafe.co.za>

Email: hello@hashherbcafe.co.za

Phone: +27 63 814 7295

Address: 15 Galaxy Road, Linbro Business Park, Johannesburg, 2065, South Africa

This document is for informational purposes only. Specifications subject to change without notice.

