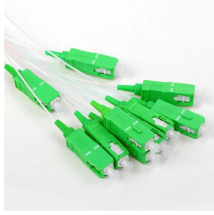


CWDM Single-Mode Module Wavelength



CWDM Single-Mode Module Wavelength



This guide walks you through practical considerations for choosing CWDM SFP modules, from understanding CWDM fundamentals to performing a successful wavelength selection for your ...



Custom 100G QSFP28 CWDM4 Optical Transceiver Cost-Effective DCI: Eliminates the need for expensive LR4 optics on intermediate single-mode spans up to 2km. Wavelength Multiplexing: ...



CWDM SFP modules work by using multiple discrete wavelengths, typically 20 nm apart across the wavelengths of 1270 nm to 1610 nm. Choosing the correct wavelength pair ensures you won't ...



CWDM uses a standardized set of optical wavelengths with wide channel spacing, allowing multiple signals to coexist on a single fiber without complex wavelength control. In CWDM systems, each ...



The central wavelengths of the 4 LAN WDM channels are 1270, 1290, 1310 and 1330 nm as members of the CWDM wavelength grid. The high performance cooled DML DFB transmitters and high sensitivity ...



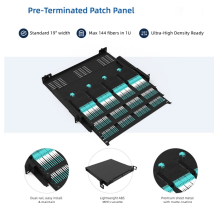
The module converts 4 input channels of 25Gb/s electrical data to 4 channels of CWDM optical signals and then multiplexes them into a single fiber, using a nominal wavelength of 1310nm, for 100Gb/s ...



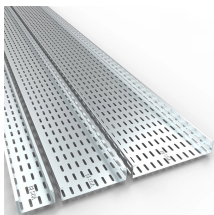
The receiver module accepts the 100Gb/s CWDM optical signals input, and de-multiplexes it into 4 individual 25Gb/s channels with different wavelength. Each wavelength light is collected by a discrete ...



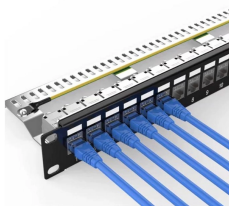
It transmits four 25Gbps channels over a single pair of single-mode fibers, utilizing four wavelengths (1270nm, 1290nm, 1310nm, and 1330nm), with a 20nm wavelength spacing.



CWDM4 modules comply with the requirements of this document and have the following common features: four optical transmitters; four optical receivers with signal detect; wavelength division ...



This option allows for multiple instances of a particular Mux/DeMux in one module or cassette. The maximum number of devices allowed is dependent on the form factor of the module/cassette, the ...



The Cisco Coarse Wavelength-Division Multiplexing (CWDM) Small Form-Factor Pluggable (SFP) solution allows enterprise companies and service providers to provide scalable and easy-to-deploy ...



The four lanes are launched with center wavelengths of 1271 nm, 1291 nm, 1311 nm and 1331 nm and multiplexed onto single mode fiber. On the receive side, the four lanes of optical data streams are de ...

Contact Us

For more information, pricing, or custom network solutions, please contact us:

Website: <https://www.hashherbcafe.co.za>

Email: hello@hashherbcafe.co.za

Phone: +27 63 814 7295

Address: 15 Galaxy Road, Linbro Business Park, Johannesburg, 2065, South Africa

This document is for informational purposes only. Specifications subject to change without notice.

