

CR15100 Wavelength Division Multiplexing Equipment



Overview

PM fiber components; patch cords, splitters/combiners, polarizers, isolators, fused/PLCS couplers, test equipment; PER meter, polarized sources, PDL emulators, polarization controllers/analyzers, digital/motor driven/manual variable attenuators, laser/laser diode to fiber delivery. PM fiber components; patch cords, splitters/combiners, polarizers, isolators, fused/PLCS couplers, test equipment; PER meter, polarized sources, PDL emulators, polarization controllers/analyzers, digital/motor driven/manual variable attenuators, laser/laser diode to fiber delivery. The foundation of the Centrix® system is a cassette that can be tailored to include a variety of optical devices, including Wavelength Division Multiplexing (WDM), providing flexibility and functionality within a single frame without sacrificing density. WDM technology is at the forefront of. Wavelength Division Multiplexing increases fiber capacity by combining (mux) and separating (demux) multiple input channels over a single fiber output. Our DWDM modules include MUX/DEMUX.

CR15100 Wavelength Division Multiplexing Equipment



Corning's dense wavelength division multiplexers (DWDMs) are integrated optical modules that combine, or multiplex, and separate, or demultiplex multiple optical signals of different wavelengths ...



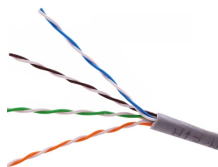
Also known as frequency division multiplexing. dense wavelength division multiplexing Dense wavelength division multiplexing (DWDM) is an optical communication technique used to increase ...



CWDM devices may also include a 1310 nm mux/demux in order to integrate video, data and voice services. Corning CWDM devices are qualified for indoor and ...



Discover our Wavelengths product offerings with interactive maps and explore Arelion's extensive network coverage. Easily filter for specific Wavelengths services, locate Points of Presence (PoPs), ...



Discover our Wavelengths product offerings with interactive maps and explore Arelion's extensive network coverage. Easily filter for specific Wavelengths ...



Our DWDM modules include MUX/DEMUX units, OADM modules, and transceivers, designed for data center interconnect (DCI), metro, and long-haul optical networks. OEM and wholesale clients benefit ...



Coarse wavelength-division multiplexing (CWDM), in contrast to DWDM, uses increased channel spacing to allow less sophisticated and thus cheaper transceiver designs.



CWDM devices may also include a 1310 nm mux/demux in order to integrate video, data and voice services. Corning CWDM devices are qualified for indoor and outdoor use and have a wide variety of ...



Explore wavelength division multiplexers (WDM), their applications, and products and learn why Corning is the best choice for WDM.



Verizon Wavelength Services uses dense wave division multiplexing technology to deliver low-latency, layer 1 transport connectivity of up to 100G speeds between locations.



The foundation of the Centrix® system is a cassette that can be tailored to include a variety of optical devices, including Wavelength Division Multiplexing (WDM), providing flexibility and functionality ...



A WaveSmart ® wavelength division multiplexer increases fiber capacity by combining or separating multiple wavelengths over a single fiber. Use of a WDM will replace the need to add more fiber cable ...

Contact Us

For more information, pricing, or custom network solutions, please contact us:

Website: <https://www.hashherbcafe.co.za>

Email: hello@hashherbcafe.co.za

Phone: +27 63 814 7295

Address: 15 Galaxy Road, Linbro Business Park, Johannesburg, 2065, South Africa

This document is for informational purposes only. Specifications subject to change without notice.

