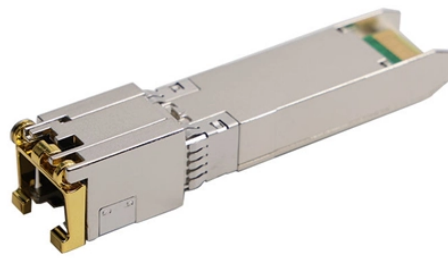
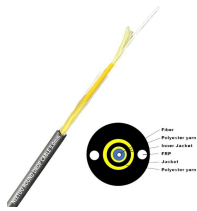


## Burundi rack-mount terminal box production



## Burundi rack-mount terminal box production



The Global Rack Mount Terminal Box Market is expected to grow at a CAGR of 6.3% from 2025 to 2035, driven by increasing demand for efficient data management and storage solutions across ...



This report profiles key players in the global Rack-Mount Terminal Box market based on the following parameters - company overview, production, value, price, gross margin, product ...



In terms of production side, this report researches the Rack-Mount Terminal Box production, growth rate, market share by manufacturers and by region (region level and country level), from 2019 to ...



4 Rack-Mount Terminal Box Production by Region  
4.1 Global Rack-Mount Terminal Box Capacity, Production and Capacity Utilization, 2020-2031  
4.2 Global Geographic Distribution of Rack-Mount ...



Burundi Terminal Boxes Pass through Cabinet Market is expected to grow during 2023-2029



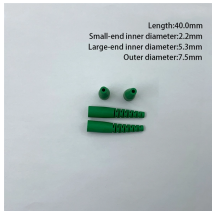
Rack-mounted terminal boxes are optical fiber or data terminal equipment designed for rack installation and are widely used in centralized management of communications and network ...



The **Asia-Pacific region**, particularly **China**, dominates rack-mount terminal box manufacturing, accounting for over 60% of global production. Recent disruptions in this region, ...



6Wresearch actively monitors the Burundi Terminal Boxes & PassThrough Cabinets Market and publishes its comprehensive annual report, highlighting emerging trends, growth drivers, revenue ...



6Wresearch actively monitors the Burundi Terminal Block Market and publishes its comprehensive annual report, highlighting emerging trends, growth drivers, revenue analysis, and forecast outlook.



Rack-mounted terminal boxes are optical fiber or data terminal equipment designed for rack installation and are widely used in centralized management of communications and network equipment.

## Contact Us

For more information, pricing, or custom network solutions, please contact us:

Website: <https://www.hashherbcafe.co.za>

Email: [hello@hashherbcafe.co.za](mailto:hello@hashherbcafe.co.za)

Phone: +27 63 814 7295

Address: 15 Galaxy Road, Linbro Business Park, Johannesburg, 2065, South Africa

This document is for informational purposes only. Specifications subject to change without notice.

