

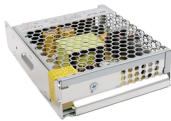
## Botswana All-Optical Switch Wholesale Manufacturer



## Botswana All-Optical Switch Wholesale Manufacturer



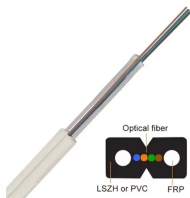
6Wresearch actively monitors the Botswana Optical Switches Market and publishes its comprehensive annual report, highlighting emerging trends, growth drivers, revenue analysis, and forecast outlook.



This optical switches buying guide provides technical background, comparison of major types, selection criteria, and an overview of suppliers.



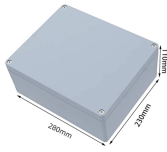
ExportHub is a leading Botswana B2B platform that is dedicated to helping global B2B buyers find leading suppliers and manufacturers from Botswana. With the help of our services, buyers can easily ...



From its humble beginning it had grown from strength to strength and spread its wings all over Botswana. Currently, the Optical Botswana Group has eleven practices four in Gaborone, three in ...



Lot 54349, Smart Partnership Office Building, Block B, 1st Floor, West Wing. Fields Mall, Gaborone West Ext 9. New CBD. Gaborone, Botswana



This section provides an overview for optical switches as well as their applications and principles. Also, please take a look at the list of 18 optical switch manufacturers and their company rankings.



Shield Engineering (Pty) Ltd t/a Shield Electricals was established in 2007. We distribute a wide variety of electrical products which are of the highest standards from our regional and international suppliers.



Chapter 2, to profile the top manufacturers of All-Optical Switches, with price, sales quantity, revenue, and global market share of All-Optical Switches from 2020 to 2025.



List of Top Verified Wholesalers in Gaborone, Botswana, Near Me. Last updated May 2026.



Find 133 Manufacturers & Suppliers in the Botswana. You can also list your company here for free.

## Contact Us

For more information, pricing, or custom network solutions, please contact us:

Website: <https://www.hashherbcafe.co.za>

Email: [hello@hashherbcafe.co.za](mailto:hello@hashherbcafe.co.za)

Phone: +27 63 814 7295

Address: 15 Galaxy Road, Linbro Business Park, Johannesburg, 2065, South Africa

This document is for informational purposes only. Specifications subject to change without notice.

