

Blow a fan into the electrical distribution box



Overview

Forced ventilation is an inexpensive and efficient solution for preventing the formation of air pockets inside electrical cabinets. Taking the right steps for installing a fan-rated electrical box ensures safety and code compliance—learn how to do it properly before starting. However, the same barriers that keep debris out can also trap heat and condensation inside, especially when devices generate heat or the. Why does the cooling fan fuse blow in the Fusion Energi?

The most common reasons for the cooling fan fuse (radiator fan fuse) blowing are: Short circuit: a short circuit in the wiring that powers the cooling fan can cause excessive current flow, which blows the fuse. Short circuits can be caused by. Yet, choosing the right cooling strategy is not just about adding a fan. In this step-by-step guide, we.

Blow a fan into the electrical distribution box



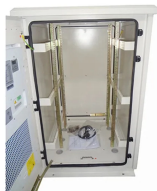
Active ventilation involves the use of fans, blowers, or cooling units to force air movement through the enclosure. This system is ideal when internal components generate a lot of heat or when ...



Discover how to design electrical cabinet cooling solutions. Compare natural ventilation, fans, heat exchangers, and air conditioners. Learn best practices for reliable panel operation.



The right electrical cabinet ventilation strategy makes all the difference. Your choice between electrical cabinet cooling fans and advanced climate control systems can determine ...



Forced ventilation is an inexpensive and efficient solution for preventing the formation of air pockets inside electrical cabinets. The best configuration includes fitting a filter fan with an exhaust filter.



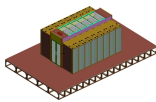
Use appropriate filters with active fans to protect internal components from dust and airborne debris. Ensure that added components don't compromise the enclosure's NEMA/IP rating.



Why does the cooling fan fuse blow in the Fusion Energi? The most common reasons for the cooling fan fuse (radiator fan fuse) blowing are: Short circuit: a short circuit in the wiring that powers the cooling ...



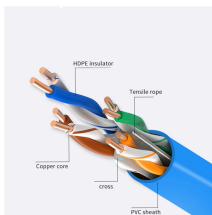
Discover how to design electrical cabinet cooling solutions. Compare natural ventilation, fans, heat exchangers, and air conditioners. Learn best ...



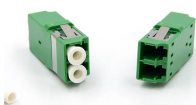
Taking the right steps for installing a fan-rated electrical box ensures safety and code compliance—learn how to do it properly before starting.



If you're looking to actually move air thru the box and maximize the heat removal, set the fan to exhaust from the top hole. Setting the fan to blow in from either hole will provide the best ...



Learn about the wiring of a blower fan motor and how it is connected to the power supply, control board, and other components in an HVAC system. Understand the different wire colors used for motor ...



If you are confident that little to no unfiltered air will get sucked into the cabinet, you should go with an exhaust fan blowing out the top. If you have lots of cracks or seems air can get into ...

Contact Us

For more information, pricing, or custom network solutions, please contact us:

Website: <https://www.hashherbcafe.co.za>

Email: hello@hashherbcafe.co.za

Phone: +27 63 814 7295

Address: 15 Galaxy Road, Linbro Business Park, Johannesburg, 2065, South Africa

This document is for informational purposes only. Specifications subject to change without notice.

