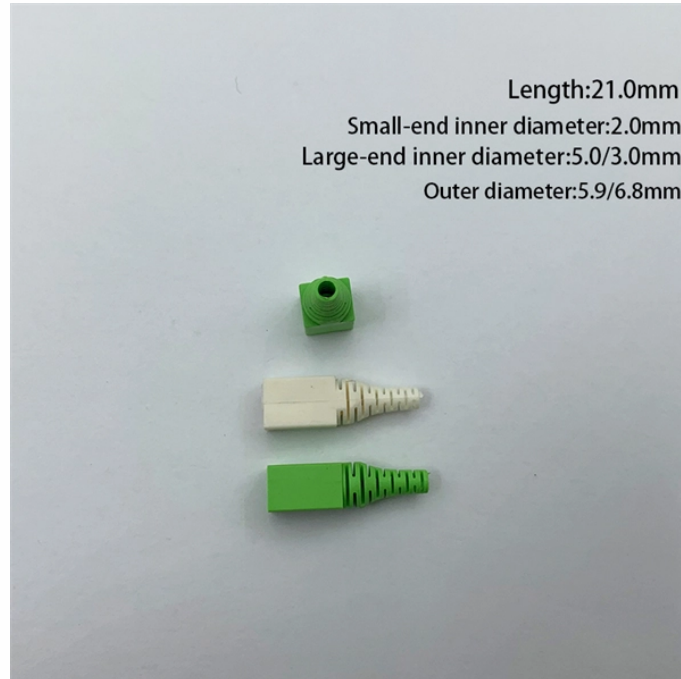


Bahrain Modular Distribution Box Equipment



Bahrain Modular Distribution Box Equipment



This includes items such as household switches, Low Voltage (LV) switchgear, distribution boards, LV cables and wires, as well as building automation systems. Submit application ...



This product is mainly suitable for industrial and mining enterprises, production workshops, building distribution, etc. It controls motors, electrical equipment, and lighting in AC 50Hz, 380/220V three ...



Tp Mccb Encl - Abb Inclusive of VAT View Item
Bahrain Switchgear & Lighting Industries W.L.L. Tp
Mcob W/Busbar - Abb Inclusive of VAT View Item



The foremost supplier of industrial electrical, instrumentation, mechanical, safety, and security equipment in the Kingdom of Bahrain & Saudi Arabia Contact Company +973 17 292 157 ...



Commitment to quality, service, our dedication and loyalty to our clients, has catalyzed our position in the electrical industry as a leading and reliable distributor across Bahrain.



Our premium distribution boxes come equipped with optional smart modules, allowing remote monitoring of power usage, real-time alerts for overloads, and even energy optimization tools.



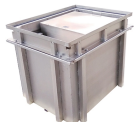
BSLI is an original equipment manufacturer (OEM) of custom electrical power distribution products. BSLI guarantees its customers fast, personalized service, quality components, and custom-designed ...



With over 26 years of industry experience, Amad Baeed delivers electrical, mechanical, and telecommunication solutions across Saudi Arabia and Bahrain.



Distribution Boards are designed and manufactured for indoor or outdoor application. The degree of protection is in accordance with IEC 60529.



Electric Boxes are an integral part of any electrical layout while construction. They remain hidden from sight but their role in electrification of home or office is very important.

Contact Us

For more information, pricing, or custom network solutions, please contact us:

Website: <https://www.hashherbcafe.co.za>

Email: hello@hashherbcafe.co.za

Phone: +27 63 814 7295

Address: 15 Galaxy Road, Linbro Business Park, Johannesburg, 2065, South Africa

This document is for informational purposes only. Specifications subject to change without notice.

