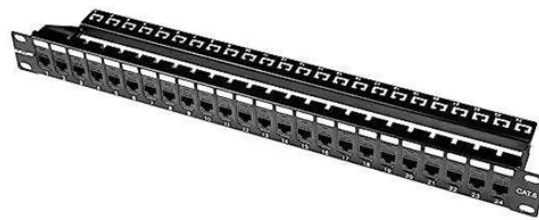


Artush Aluminum Alloy Cable Trays



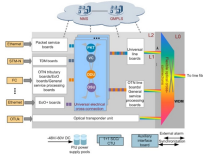
Artush Aluminum Alloy Cable Trays



Extra wide aluminum rungs are welded to extruded aluminum I-beam side rails. Every second rung is reversed to allow for easy top or bottom mounting of cable ties and clamps. All edges and welds are ...



The aluminum cable tray is a lightweight, durable, and cost-effective solution used for organizing and safely carrying electrical and data cables. With easy installation and strong corrosion resistance, it is ...



Our aluminum, I-beam ladder cable trays feature 3-inch tangents and are using connectable with our fittings and accessories. Aluminum ladder cable trays benefit from being lightweight and resistant to ...



Shop Aluminum Cable Tray and other Rooftops products. Straight Aluminum Ladder Tray, 45° Horizontal Bends and more.



As a less-expensive alternative to conduit, a stronger alternative than wire basket, and superior to generic tray, Snap Track saves on labor and reduces total installed costs.



This article explores the design, benefits, installation practices, and real-world applications of aluminum alloy cable trays, providing actionable insights for your next project.



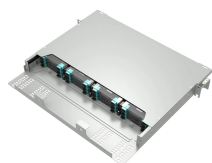
Aluminum Cable Tray systems are lighter than steel cable tray and Certified CSA Cable Tray, UL listed, NEMA and certified. Because of their lighter weight aluminum cable trays are easier to install than ...



Our Aluminum Alloy Cable Tray is developed in-house with reference to the NEMA VE1-1979 Cable Tray Systems standard. Designed with simplicity and durability in mind, it offers outstanding corrosion ...



The aluminum cable tray is a lightweight, durable, and cost-effective solution used for organizing and safely carrying electrical and data cables. With easy installation and strong corrosion resistance, it is ...



Aluminum alloy cable tray is made of aluminum alloy through extrusion molding. Compared with stainless steel cable trays, aluminum alloy cable trays are much lighter, thus they are easy to install.

Contact Us

For more information, pricing, or custom network solutions, please contact us:

Website: <https://www.hashherbcafe.co.za>

Email: hello@hashherbcafe.co.za

Phone: +27 63 814 7295

Address: 15 Galaxy Road, Linbro Business Park, Johannesburg, 2065, South Africa

This document is for informational purposes only. Specifications subject to change without notice.

