

Around the high-voltage distribution box on the roadside



Overview

Maintaining a 10-foot clearance around pad-mount transformer boxes is a good guideline. Never paint or cover the pad-mount. Setting up a safe work zone for line work is a critical, multi-faceted process that balances the dual threats of public traffic and high-voltage electrical hazards. A successful setup hinges on a meticulously crafted Temporary Traffic Control Plan (TTCP) that adheres to the standards outlined in. High-voltage transmission lines are necessary for delivering electricity over long distances – from generating plants to distribution substations. Electrical contact between an object on the ground and an energized power line can occur even though there is no direct contact. In other words, do not lift, elevate, build or pass. ed to stay at least 15 feet away from power lines. For instance, OSHA's Table R-6 specifies minimum approach distances for various voltage ranges, ensuring workers adhere to safe practices when operating near live electrical parts.

Around the high-voltage distribution box on the roadside



Electrical boxes, power lines, and substations are important parts of our distribution infrastructure. Learn about them and how to report open or damaged electrical equipment.

More durable and robust

The outer layer is made of environmentally friendly PVC which is soft and elastic. It can be stretched without damage, so you can use it with confidence.



This distance varies with line operating voltage . Unlike wiring at home, conductors of overhead transmission lines a her voltage lines because contact is more likely . The electrical conductors of ...



Article 110.26 establishes minimum working clearances around electrical equipment, which directly impacts bollard placement and design. These clearances ensure ...



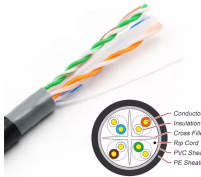
Setting up a safe work zone for line work is a critical, multi-faceted process that balances the dual threats of public traffic and high-voltage electrical hazards.



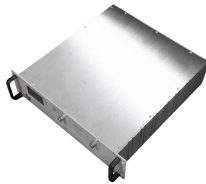
Maintaining a 10-foot clearance around pad-mount transformer boxes is a good guideline. Pad-mount transformer boxes are grounded, so it is safe to occasionally mow or trim any ...



Preference n be just as safe as - is ourselves: we must learn to behave safely around them. This booklet is a basic safety guide for those who live and work around power lines. It deals primarily with nuisance ...



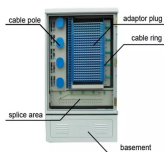
This section offers guidance for persons conducting a business or undertaking (PCBU) on how to keep road and roadside workers safe when working near utilities and services located ...



Follow the procedure below to apply the 30-10-10 ft. rule when equipment and/or maximum radius is at or inside 30 ft. from the closest HVOL. Warning: Both the operator and spotter must follow this ...



High-voltage transmission lines are necessary for delivering electricity over long distances – from generating plants to distribution substations. Overhead high-voltage transmission lines are not ...



The chart is particularly crucial for workers involved in transmission and distribution operations, where the potential for electrical hazards is high due to the system voltages present.



To minimize damage or injury by this induced voltage, park your vehicle away from the high voltage power line. HHWP has specific restrictions for roads within the ROW and for parking near high ...



Portable generators have become common. Back-feed is dangerous. It can energize lines or objects in contact with lines such as fences. In the event of an outage when you must leave your home ...

Contact Us

For more information, pricing, or custom network solutions, please contact us:

Website: <https://www.hashherbcafe.co.za>

Email: hello@hashherbcafe.co.za

Phone: +27 63 814 7295

Address: 15 Galaxy Road, Linbro Business Park, Johannesburg, 2065, South Africa

This document is for informational purposes only. Specifications subject to change without notice.

