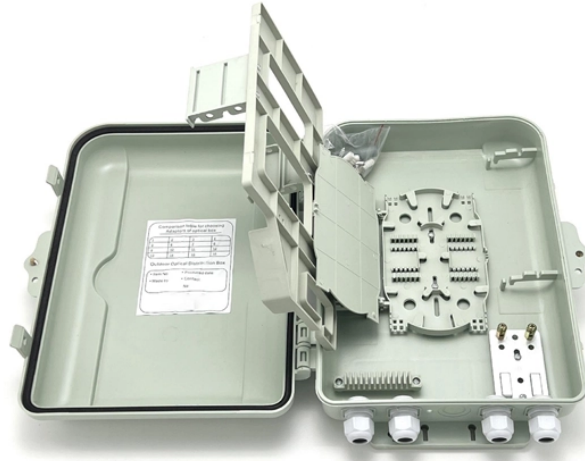


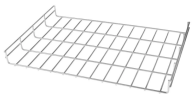
Armored Flame-Retardant Multimode Fiber



Armored Flame-Retardant Multimode Fiber



SteelFlex Armored Fiber Patch Cables feature a specialized jacketing that increases the durability of fiber cables by up to 10x, yet retains full cable flexibility. Each fiber patch cable is available with ...



Plenum fiber is also safer than other cable jacket types because of its resistance to flame and low smoke. Riser Armored Fiber Cable is the perfect option for multi-story building applications; this ...



Multimode or singlemode fibers colored per TIA/EIA 598 Fibers are protected in gel-filled loose tubes stranded around a central strength member to ensure optimum performance and long life



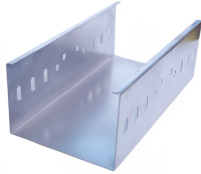
Lightweight and easy to handle, Complex Armored Fiber Optic Patch Cables feature a stainless-steel tube wrapped around the fibers and are designed for intrabuilding applications such as data centers ...



Lifeline® QFCI is the first UL flame listed optical cable designed for indoor/outdoor use in vital communication and emergency systems that need to be operational during fire. The cable has a ...



Offered in OM1, OM3 and OM4 multimode and OS2 singlemode, in 4, 8, 12 or 24 core fibre configurations. All feature a corrugated steel tape armour for protection from rodents, a central loose ...



AMPCOM fiber optic cable pre terminated enable high-bandwidth data transmission for telecom, data centers, FTTH, and industrial networks. Featuring OM3/OM4 multimode, single-mode, armored, and ...



direct burial installations. They have a steel armored construction which provides protection against extreme weather conditions rodents, water and humidity. Encased with flame retardant jacket and ...



Designed with a rugged armored tube and TPU jacket, this 12-core fiber cable ideal for outdoor installations, industrial facilities, or remote locations with fluctuating climates.



Corning FREEDM® One interlocking armored cables are flame-retardant, indoor/outdoor cables designed for interbuilding and intrabuilding backbone installations that eliminate the need for a ...

Contact Us

For more information, pricing, or custom network solutions, please contact us:

Website: <https://www.hashherbcafe.co.za>

Email: hello@hashherbcafe.co.za

Phone: +27 63 814 7295

Address: 15 Galaxy Road, Linbro Business Park, Johannesburg, 2065, South Africa

This document is for informational purposes only. Specifications subject to change without notice.

