

## Armored 48-core single-mode fiber



## Armored 48-core single-mode fiber



TiniFiber® is a revolutionary designed fiber optic cable that will provide the single best solution for all your fiber optic projects and usage. Micro Armor Fiber™ can be used in any application: Telco, ...



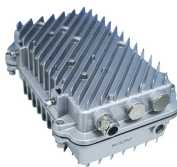
These subunits surround a dielectric central member and are protected by a flexible, spirally wrapped, aluminum interlocking armor that offers easy, one-step installation and up to seven times the crush ...



Produced with single mode fiber technology, these cables provide high performance and reliability in networks that require long-distance and high-capacity data transmission.



This 48-core OFC RDSO-approved optical fiber cable with best price is built for high-capacity communication networks in railways and telecom. Featuring single-mode fibers compliant with ITU-T ...



Overview: The 48 Core GYTY53 Fiber Optic Cable is a robust, fully armored outdoor cable engineered for long-distance transmission and direct burial applications.



Fiber Optic Outside Plant Cable, 48-core, ECSS (Electro Chrome Coated Steel) Armored, Loose-tube, Gel-filled, 9/125  $\mu\text{m}$ , OS2, Singlemode, Black cable jacket



TiniFiber® is a revolutionary designed fiber optic cable that will provide the single best solution for all your fiber optic projects and usage. Micro Armor Fiber™ can be used in any application: Telco, ...



48 ct Single-Mode Armored Fiber Optic Cable, Low Water Peak Fiber Cable, Singlemode, 48 ct., Single Armor, Single Jacket, Loose Tube, Low Water Peak, Dry/Dry. Price Per Ft. Our reels have a ...



Our outdoor armored pre-terminated fiber optic assemblies are perfect for campus backbones, headend termination to a fiber backbone, and intra-building backbones. They are also designed for a variety of ...



ELV CABLE 48 core armored Fiber Optic Cable G652d Single mode with a connector pre terminated on one end and exposed fiber on the other. The end is stripped and fusion spliced to a single or multi ...

## Contact Us

For more information, pricing, or custom network solutions, please contact us:

Website: <https://www.hashherbcafe.co.za>

Email: [hello@hashherbcafe.co.za](mailto:hello@hashherbcafe.co.za)

Phone: +27 63 814 7295

Address: 15 Galaxy Road, Linbro Business Park, Johannesburg, 2065, South Africa

This document is for informational purposes only. Specifications subject to change without notice.

