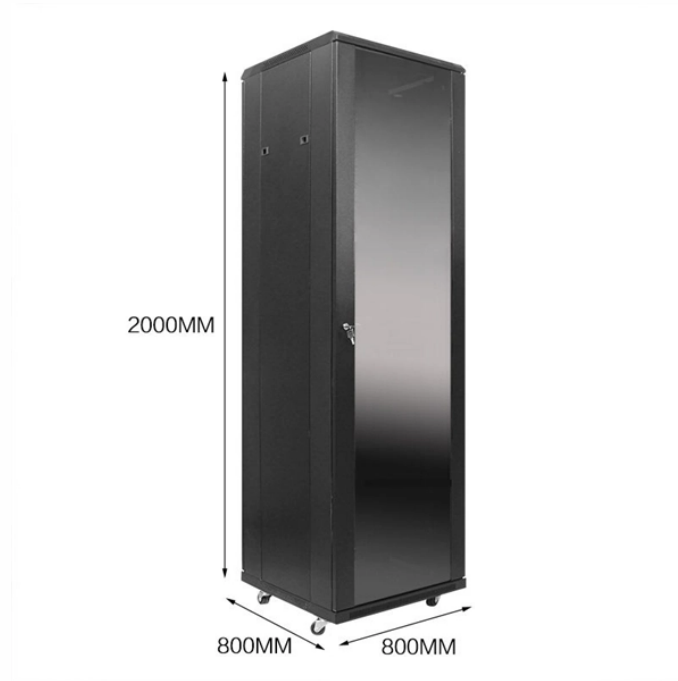


Are there high requirements for the placement of network server racks



Overview

This guide covers the technical requirements for modern rack deployments: Cat6A cabling for multi-gigabit infrastructure, thermal dissipation for high-power PoE devices, proper rack depth planning, and SFP+/DAC uplink configurations. Learn Cat6A requirements for Wi-Fi 7, PoE++ thermal management, SFP+ uplinks, and proper installation techniques for 10Gbps infrastructure. Whether creating a small or large server room. The racks should be positioned in a way that optimizes cooling and facilitates management, maintenance, and troubleshooting. Once you have the right racks in the right place, you're faced with installing the IT equipment. Cooling systems: Maintain ideal server room temperature and humidity levels.

Are there high requirements for the placement of network server ra



Placement of your server racks and cabinets can make a significant short and long term difference. This article will discuss the most important factors in server rack positioning and provide ...



Data center server racks are more than equipment enclosures—they define the efficiency, reliability, and scalability of the infrastructure inside them. The right rack supports ...



Adhering to server rack layout best practices is essential in ensuring the optimal arrangement of equipment, which significantly contributes to the overall effectiveness and safety of ...



Learn Cat6A requirements for Wi-Fi 7, PoE++ thermal management, SFP+ uplinks, and proper installation techniques for 10Gbps infrastructure. Modern network racks face new physical ...



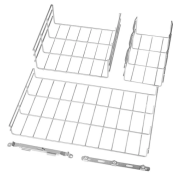
Explore our in-depth guide to network server racks—from essential parameters and specific measurements to common types, materials, and key factors to consider when choosing an OEM ...



Although network racks contain different equipment than server racks, the same equipment layout best practices apply. Equipment needs to be easy for administrators to access, and ...



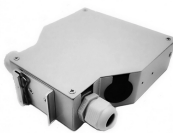
This guide explores every aspect of server room requirements from design and environmental controls to safety and cost considerations. We'll also compare server rooms with data ...



This guide explores every aspect of server room requirements from design and environmental controls to safety and cost considerations. We'll also ...



Rack enclosures must have access points for power at the bottom of the rack, and access points for data pathways at the top of the rack. Rack depth is usually not a concern, but deep racks are ...



Adhering to server rack layout best practices is essential in ensuring the optimal arrangement of equipment, which significantly contributes to the ...



“Open racks excel in airflow, but for high-security needs, enclosed racks are unmatched,” notes a guide on server rack basics. Size is a critical factor. Standard racks measure 19 inches wide, but depths ...



A complete guide to network server racks. Learn how to select the right cabinet, manage cables, and ensure a certified installation for your IT infrastructure.

Contact Us

For more information, pricing, or custom network solutions, please contact us:

Website: <https://www.hashherbcafe.co.za>

Email: hello@hashherbcafe.co.za

Phone: +27 63 814 7295

Address: 15 Galaxy Road, Linbro Business Park, Johannesburg, 2065, South Africa

This document is for informational purposes only. Specifications subject to change without notice.

