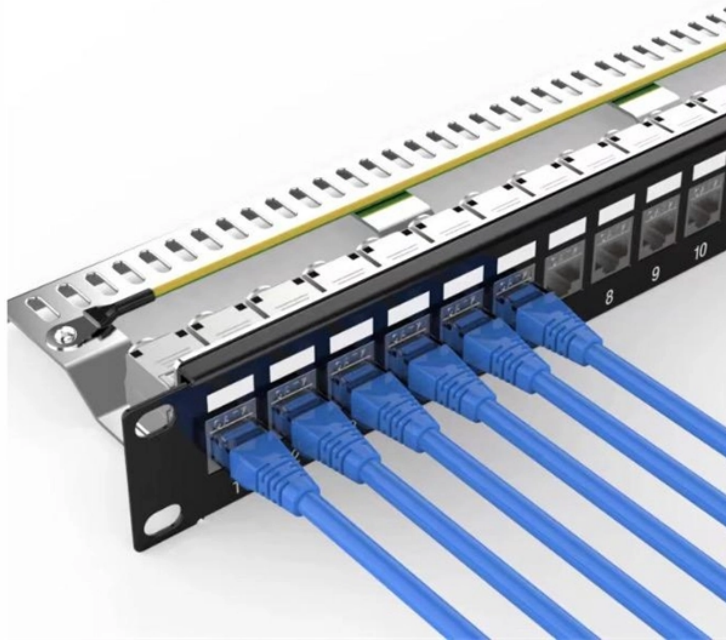


Are network cable terminal boxes and optical fiber distribution boxes the same



Overview

Although fiber distribution boxes and fiber optic termination boxes may look similar, their functions, structure, and placement within FTTH networks are fundamentally different. Correct selection ensures efficient fiber management, smoother installation, and fewer problems during. While they may seem similar, each serves distinct purposes and is used in different contexts within a network. This article delves into the key differences between a terminal box and a distribution box, providing an in-depth understanding of their functions, applications, and importance in. What is the difference between optical cable terminal box and optical fiber distribution box?

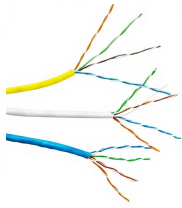
The optical cable terminal box is divided into: engineering plastic ABS material and high-quality cold-rolled steel plate; the inlet port has a plastic protective ring to reduce the friction between the. In modern FTTH (Fiber to the Home) and optical communication networks, three types of fiber distribution products are widely used: Splitter Distribution Box, ODF (Optical

Distribution Frame), and Fiber Terminal Box. Fiber closure protects spliced fibers in backbone and feeder lines, fiber box (or fiber distribution box) organizes and splits fibers in.

Are network cable terminal boxes and optical fiber distribution boxes



A Fiber Distribution Terminal (FDT), also known as an FTTH cabinet, is essential in Fiber to the Home (FTTH) networks. It centralizes connections, linking service provider fibers to homes or buildings.



Although fiber distribution boxes and fiber optic termination boxes may look similar, their functions, structure, and placement within FTTH networks are fundamentally different. Correct selection ...



While terminal boxes are ideal for terminating and protecting fiber connections in small-scale applications, distribution boxes provide the necessary functionality and capacity for...



What is the difference between optical cable terminal box and optical fiber distribution box. 1. Different in nature. The optical cable terminal box is an auxiliary device for terminal wiring in ...



Fiber terminal box is the final point of FTTH delivery, connecting indoor drop cables to ONT equipment. Although smaller than closures or distribution boxes, its reliability is crucial to ...



While terminal boxes are ideal for terminating and protecting fiber connections in small-scale applications, distribution boxes provide the necessary ...



These accessories have similar appearances at first glance, and even the same way of use, which is easy to confuse. This article will start from these two accessories, briefly compare ...



ODF, Splitter Distribution Box, and Fiber Terminal Box are not interchangeable, but complementary components of an FTTH network. ODF ...



While both are fundamental passive components in a fiber network, the Fiber Distribution Box and Fiber Terminal Box play sequential and distinct roles. The FDB divides and distributes the ...



ODF, Splitter Distribution Box, and Fiber Terminal Box are not interchangeable, but complementary components of an FTTH network. ODF ensures efficient backbone fiber ...



While a fiber optic termination box serves a single user or only a limited number of users (less than five), a Fiber Distribution Box is designed to provide fiber access for multiple users.

Contact Us

For more information, pricing, or custom network solutions, please contact us:

Website: <https://www.hashherbcafe.co.za>

Email: hello@hashherbcafe.co.za

Phone: +27 63 814 7295

Address: 15 Galaxy Road, Linbro Business Park, Johannesburg, 2065, South Africa

This document is for informational purposes only. Specifications subject to change without notice.

