

## Are industrial switches faster



### Overview

They provide higher bandwidth and faster data transfer. Key characteristics include: Gigabit switches are becoming the standard in new industrial deployments. It operates using the IEEE 802. Fast Ethernet switches are. An industrial switch, also known as an industrial Ethernet switch, is a type of networking technology specifically designed for use in industrial settings. Copper or Fiber?

Data Transmission Options Fiber optic cable offers significant advantages over copper for data. Increase productivity, boost security, and empower industrial AI with Cisco's wide range of market-leading industrial switches.

## Are industrial switches faster



An industrial Ethernet switch is a type of network switch designed to operate in harsh industrial environments. Oil rigs, railways, manufacturing plants, and similar applications require industrial ...



In the future, with the widespread adoption of smart manufacturing, industrial switches will evolve toward higher speeds, lower latency, and greater intelligence. Companies like Jinan USR IOT ...



In this blog post, we'll explore the role of industrial switches and five key characteristics to look for when you are selecting switches for your own operations.



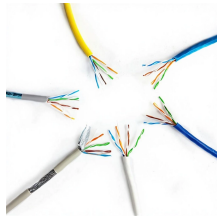
Real-time Industrial switch: Supports real-time Ethernet protocols such as PROFINET, EtherCAT, etc., ensuring accurate data transmission and meeting the real-time requirements of ...



An industrial switch, also known as an industrial Ethernet switch, is a type of networking technology specifically designed for use in industrial settings. It provides reliable, high-speed data ...



This article explains the practical differences between Gigabit and Fast Ethernet industrial switches. The focus is on real-world industrial applications and network design considerations.



Industrial switches are rugged, support wider power ranges, redundant supplies, and have faster recovery times compared to commercial ones made for controlled office environments.



Benefit from industrial AI and software-defined automation, thanks to a reliable, low-jitter, high-bandwidth network that prioritizes time-sensitive data so that you can optimize production, increase productivity, ...



Industrial switches generally have a fast ring network and fast redundancy, and the system redundancy time can be less than 50ms. Although commercial PoE switches can also form redundant networks, ...



Industrial Ethernet switches are categorized by type, mounting option and speed, and they can be optimized for use with both copper and fiber cables. Unmanaged switches are plug-and ...

## Contact Us

For more information, pricing, or custom network solutions, please contact us:

Website: <https://www.hashherbcafe.co.za>

Email: [hello@hashherbcafe.co.za](mailto:hello@hashherbcafe.co.za)

Phone: +27 63 814 7295

Address: 15 Galaxy Road, Linbro Business Park, Johannesburg, 2065, South Africa

This document is for informational purposes only. Specifications subject to change without notice.

