

Are 1 25G and 2 5G optical modules compatible



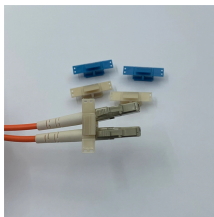
Are 1 25G and 2 5G optical modules compatible



SFP modules support very low EMI and excellent ESD protection. Featuring low power consumption, these fiber modules are ideal for enterprise LAN networks and other optical links. Please select the ...



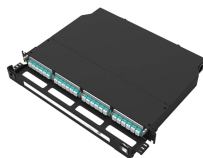
Amphenol's SFP optical transceivers include 1.25Gb and 2.5Gb series. They support duplex, bidi, cwm, and dwdm applications, and can reach various distances from 500m to 80km. ...



Actual product appearance and specifications may vary. *Product performance is based on testing in a controlled environment. Your results may vary due to several external and environmental factors. For ...



While MikroTik cannot ensure full compatibility with modules from all manufacturers, as long as the other vendor modules and devices comply with transceiver multi-source agreement (MSA) they should be ...



By switching to a FTTH GPON SFP module 1.25G 2.5G that supported higher data rates, we were able to reduce contention and improve the Quality of Service (QoS) for the users.



Understand the core function, compare data rates (1G to 25G), learn critical compatibility rules, and follow our 5-step checklist for selecting the perfect SFP optical module for your network build.



The compatibility between SFP vs SFP+ largely depends on the port and module combination. Although both transceivers share the same form factor, their performance differs ...



The deployment of 5G networks has accelerated the demand for high-performance optical modules, which serve as the backbone of high-speed, low-latency data transmission in wireless ...



Source custom 1.25G and 2.5G SFP MODULE solutions direct from our 3 specialized factories. We provide 100% switch compatibility, OEM coding, and rigorous QC.



1.25G/2.5G SFP Optical Modules are compatible with the Multi-Source Agreement and SFF-8472 with LC connectors at DWDM wavelengths range from CH17 to CH61.

Contact Us

For more information, pricing, or custom network solutions, please contact us:

Website: <https://www.hashherbcafe.co.za>

Email: hello@hashherbcafe.co.za

Phone: +27 63 814 7295

Address: 15 Galaxy Road, Linbro Business Park, Johannesburg, 2065, South Africa

This document is for informational purposes only. Specifications subject to change without notice.

