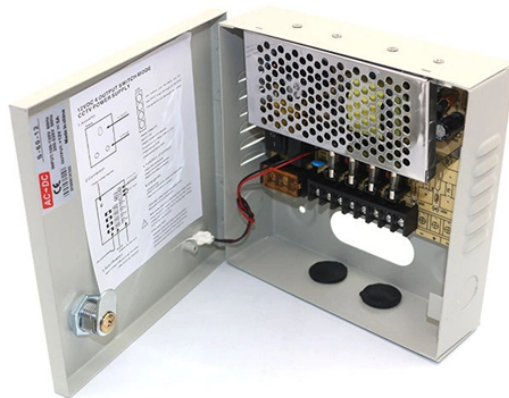


Applicable Aggregation Switch for Monitoring Projects

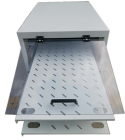


Overview

A campus/industrial edge aggregation switch concentrates PoE endpoints and uplinks while enforcing TSN determinism, hardware PTP/802.1AS time stamping, and telemetry-driven power/thermal control—so latency, power, and failures stay bounded and explainable. This document provides reference architectures for configuring networks for small campuses, large campuses, small software-defined (SD) branches, medium SD-branches, and large SD-branches. “Campus” covers a wide range of networks and locations, from multiple floors in an office tower to a. Test access points (TAP) aggregation is an alternative solution to help with monitoring and troubleshooting tasks in the data center. 5G, and 10G speeds for flexible customization, ensuring optimal performance, compatibility, and scalability Flexible interface options like copper, fiber, and PoE ensure seamless integration and cost-effective deployment Supports stacking for easier management, improved redundancy. An aggregation switch is a network device that consolidates traffic from multiple access switches, wireless access points, or other edge devices and forwards it to core switches or routers. By combining multiple switches into a cohesive system, organizations can improve efficiency, scalability, and

management. Aggregation Switches serve as the.

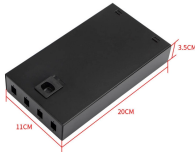
Applicable Aggregation Switch for Monitoring Projects



Switch aggregation is transforming how networks handle data traffic. By combining multiple switches into a cohesive system, organizations can improve efficiency, scalability, and ...



Provides 1G, 2.5G, and 10G speeds for flexible customization, ensuring optimal performance, compatibility, and scalability. Flexible interface options like copper, fiber, and PoE ensure seamless ...



The TAP aggregation switch is directly connected to all of the analysis tools used to monitor the events in the network fabric. These monitoring devices include remote monitor (RMON) ...



Gigamon solutions go beyond simple filtering and aggregation switches and offer a Unified Visibility Fabric for Physical, Virtual, and Cloud Monitoring with GigaSmart Advanced Intelligent Applications ...



Using this design, you can go up to eight switches and never need more than 4x10-GbE ports per switch to interconnect other access-layer switches or the aggregation layer.

Contact Us

For more information, pricing, or custom network solutions, please contact us:

Website: <https://www.hashherbcafe.co.za>

Email: hello@hashherbcafe.co.za

Phone: +27 63 814 7295

Address: 15 Galaxy Road, Linbro Business Park, Johannesburg, 2065, South Africa

This document is for informational purposes only. Specifications subject to change without notice.

