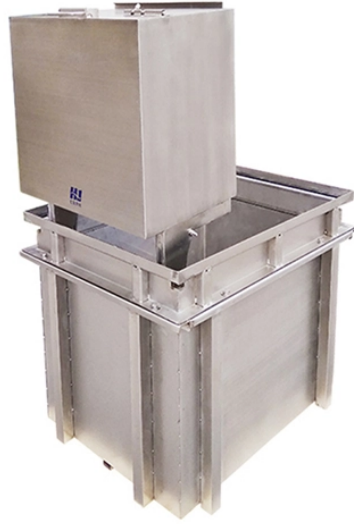


Anti-aging principle of fiber optic trays



Overview

This aging happens as trays are exposed to environmental factors such as moisture, temperature changes, ultraviolet light, and industrial pollutants. Their primary function is mechanical rather than optical. Splice trays help maintain: They do not modify signal. Fiber optical splice closures are used to distribute, splice, and store the outdoor optical cables which enter and exit from the ends of the closure. This paper analyzes the change of optical fibers from the aspect of aging under the influence of transmitted signals and the aspect of parameter degradation during exploration. Fibre optic splicing trays are an essential part of manipulating and ordering optical fibers inside a network structure. Since the need for higher data rates and effective communication gets more robust, the utilization of optical fibers has become increasingly widespread across multiple spheres of.

Anti-aging principle of fiber optic trays



The meaning of ANTI is one that is opposed. How to use anti in a sentence.



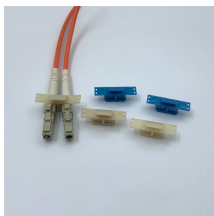
For protection against the outside plant environment and damage, splices require placement in a protective enclosure, usually called a splice closure. Splices are generally placed in a splice tray ...



The closure casing is made of quality engineering plastics, and of good performance of anti-erosion against acid and alkali salt, anti-aging, as well as smooth appearance and reliable mechanical structure.



In addition to environmental stress, trays carry cables, which add mechanical loads. Over time, this combined stress causes materials to weaken, corrode, crack, or deform. Aging reduces the ...



The stackable fiber cassettes provide security for fusion splicing and can be used with different cable options. The tray incorporates clamps to secure loose tubes and pigtails on entry and exit.



Anti- is a prefix meaning against, opposing, or contrary to. It is used to form adjectives or nouns that describe opposition or resistance to something, such as anti-war, anti-establishment, or anti-aircraft.



Find 252 different ways to say ANTI, along with antonyms, related words, and example sentences at Thesaurus .



They do not modify signal transmission characteristics directly, but poor tray organization can increase the risk of mechanical stress and accidental fiber damage.



Abstract The first generation of installed optical cables in Eastern Europe has been in use for more than 20 years. This paper analyzes the change of optical fibers from the aspect of aging ...



Factsheet What does the word anti mean? There are four meanings listed in OED's entry for the word anti. See "Meaning & use" for definitions, usage, and quotation evidence.



ANTI definition: 1. opposed to or against a particular thing or person: 2. a person who is opposed to something or.... Learn more.



Optical and mechanical testing was conducted on both fiber and cable to verify performance after field aging. All testing indicates no degradation in fiber/cable performance.



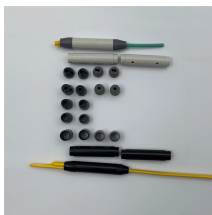
Discover essential fiber optic splice tray solutions with our comprehensive guide, designed to route and protect fiber cables while ensuring optimal performance and durability.



Anti- is used to form adjectives and nouns that describe someone or something that is opposed to a particular system, practice, or group of people. ...anti-government demonstrations. ...anti-racist ...



They are equipped with splice holders, compatible with all standard types of heat shrink or crimp type splice protectors, and provide enough space for storage and management of the excess fiber.



This paper analyzes the change of optical fibers from the aspect of aging under the influence of transmitted signals and the aspect of parameter degradation during exploration.



The word anti comes from the prefix anti-, which means “against” or “opposite,” and is still used in English words, such as antibodies and anti-hero. As a word on its own anti is an adjective or ...

Contact Us

For more information, pricing, or custom network solutions, please contact us:

Website: <https://www.hashherbcafe.co.za>

Email: hello@hashherbcafe.co.za

Phone: +27 63 814 7295

Address: 15 Galaxy Road, Linbro Business Park, Johannesburg, 2065, South Africa

This document is for informational purposes only. Specifications subject to change without notice.

