

Angola Laser Diode DML



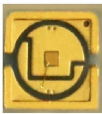
Overview

This is a pulsed laser with built in monitor Photodiode. Multiple wavelength configurations available. A 10 Gb/s edge emitting laser diode in a TO-can package. Lumentum manufactures indium phosphide (InP) directly-modulated lasers (DMLs) in our internal wafer foundry. These DMLs are based on the distributed feedback (DFB) diode lasers. A DML uses a single chip with a simple electrical circuit design, so it can be an optimal choice for a compact circuit configuration with low. DESCRIPTION The laser diode driver consists of four sections: LD bias, back PD current monitor and temperature stabilizer, and voltage-to-current convertor which allows modulation up to 10MHz. A Graphical user. A Directly Modulated (DML) laser diode chip is a type of laser diode chip that can be directly modulated by varying the current injected into the laser diode.

Angola Laser Diode DML



- Summary The key difference between DML and EML lies in the operating state of the laser diode: • In DML, the laser diode operates in an unstable state with fluctuating light intensity. • In EML, the laser ...



The advantages of this type of laser are small in size - the laser diode and the electrical control system are combined within a single semiconductor system - relatively small power consumption and a ...



The Multi-quantum well distributed feedback (DFB) laser is directly modulated (DML) with a RF signal. This device comes with a built in Photodiode monitor to allow Auto-bias operation.



The key laser technologies used in 100G/200G/400G/800G transceivers are EML and DML. So what are the differences between them? This article will discuss the basics of EML and ...



Our DFB DML laser diode module takes the advantage of good wavelength stability, good linearity, wide wavelength range, and high precision.



LR application for links up to 30km, per IEEE 802.3cc standard.



Angola Laser Diode Market Overview The laser diode market in Angola is expanding due to growing applications in telecommunications, medical devices, and industrial equipment. Technological ...



The 1861 directly-modulated laser (DML) is a cost-effective solution for 10 Gb/s digital transmission of up to 60 km using traditional intra-city SMF-28 single-mode fiber links.



A Directly Modulated (DML) laser diode chip is a type of laser diode chip that can be directly modulated by varying the current injected into the laser diode. The modulation of the current causes a ...



- Summary The key difference between DML and EML lies in the operating state of the laser diode: • In DML, the laser diode operates in an unstable state with ...

Contact Us

For more information, pricing, or custom network solutions, please contact us:

Website: <https://www.hashherbcafe.co.za>

Email: hello@hashherbcafe.co.za

Phone: +27 63 814 7295

Address: 15 Galaxy Road, Linbro Business Park, Johannesburg, 2065, South Africa

This document is for informational purposes only. Specifications subject to change without notice.

