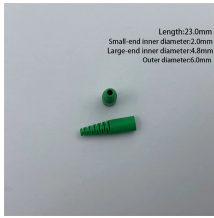


Analysis of Network Disconnection Causes at Aggregation Layer Switches



Analysis of Network Disconnection Causes at Aggregation Layer Sw



Through this case study, we'll dissect why switch aggregation ports demand surgical precision in configuration—and how to avoid becoming the next cautionary tale.



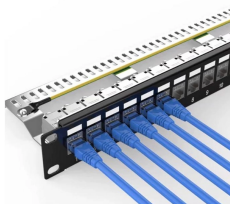
The basic solution being proposed is to place one or more commodity Ethernet switches into the PoP as smart aggregation switches. Those switches would connect the CE devices and/or access devices to ...



This chapter covers the design recommendations for a data center design deployment consisting of a Cisco Nexus® 7000 Series Switch at the aggregation layer and a Cisco Nexus 5000 Series Switch at ...



Through our analysis, we aim to address these challenges to characterize network fail-ures, estimate the failure impact, and analyze the effectiveness of network redundancy in data centers.



Layer 2 and Layer 3 switches play distinct roles in network aggregation setups, and understanding their differences can help in making informed network design decisions.



Regardless of the layer on which aggregation occurs, it is possible to balance the network load across all links. However, in order to avoid out-of-order delivery, not all implementations take advantage of this.



The customer has newly established wireless services in two buildings, corresponding to two aggregation switches A and B. After the services went live, it was found that APs in both buildings ...



Experiencing frequent network connection drops with a network switch? Discover the reasons behind this issue and learn how to troubleshoot it effectively.



The potential geographic distribution of access switches across many buildings in a larger campus would also require more fiber optics to interconnect if the aggregation layer was not there. An ...



Examples in this document are representative and might not match your particular switch or environment. The slot and port numbers in this document are for illustration only and might be ...



Experiencing frequent network connection drops with a network switch? Discover the reasons behind this issue and learn how to troubleshoot it ...

Contact Us

For more information, pricing, or custom network solutions, please contact us:

Website: <https://www.hashherbcafe.co.za>

Email: hello@hashherbcafe.co.za

Phone: +27 63 814 7295

Address: 15 Galaxy Road, Linbro Business Park, Johannesburg, 2065, South Africa

This document is for informational purposes only. Specifications subject to change without notice.

