

## Amanbu Cable Tray Custom Manufacturer

10G to 10G

High speed cable



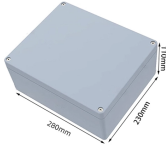
SFP(Package)

LC(Interface type)

Com.(Case Temperature)



## Amanbu Cable Tray Custom Manufacturer



Wire mesh cable trays are lined with wire mesh and may be cut or bent to accommodate custom installations. Fast installation with dependable support. Everything you need to build a cable ...



No other cable tray or cable bus manufacturer can match the experience, engineering proficiency or manufacturing capabilities of MP Husky. Our team of knowledgeable and experienced engineers ...



Custom cable tray manufacturing offers a tailored approach to cable management, addressing the unique needs of various projects and environments. By investing in custom solutions, you can ...



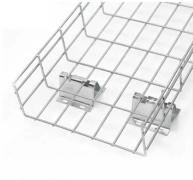
Our cable trays and accessories are manufactured using the highest industry standards, ensuring durability and reliability. You can trust our products to provide safe and efficient cable management ...



This list of top 10 online B2B marketplaces and manufacturers will lead you to find your perfect cable trays based on your business requirements.



Discover verified suppliers offering galvanized steel, perforated, and stainless steel cable trays. Get competitive pricing and custom solutions for your project.



Sunil Engineering Corporation specializes in manufacturing a diverse range of cable trays, including perforated and ladder types, as well as accessories and junction boxes, emphasizing high-quality ...



We offer modern, innovative, and technically advanced cable trays, tray covers and wire management accessories, support, and logistics management with an emphasis on customer service.



JLH Electric offers a variety of custom cable trunking options, such as hot dip galvanized, powder coated, stainless steel, PVC, and fiberglass, tailored with various configurations, materials, ...



Custom manufacturer of cabletrays made from aluminum, fiberglass reinforced plastic (FRP), galvanized and stainless steel materials. Suitable for supporting insulated electrical cables.

## Contact Us

For more information, pricing, or custom network solutions, please contact us:

Website: <https://www.hashherbcafe.co.za>

Email: [hello@hashherbcafe.co.za](mailto:hello@hashherbcafe.co.za)

Phone: +27 63 814 7295

Address: 15 Galaxy Road, Linbro Business Park, Johannesburg, 2065, South Africa

This document is for informational purposes only. Specifications subject to change without notice.

