

Aluminum Channel Cable Tray



Aluminum Channel Cable Tray



As a less-expensive alternative to conduit, a stronger alternative than wire basket, and superior to generic tray, Snap Track saves on labor and reduces total installed costs.



Secure power, control, or alarm cables easily with Cope aluminum channel cable tray.



The 653 Series Aluminum Cable Tray is a ultralight weight, high capacity cable tray system designed to accommodate customer's needs for an extra large cable tray.



Cable channel T& B offers cable channel in solid or ventilated straight sections. Ventilating channel has burr-free oblong punched holes for easy access. Ty-Rap cable tie slots are provided between each ...



Cablofil is the global gold standard for total cable management. Explore the one-stop shop for innovative, fast, and dependable cable management systems including wire mesh tray, ladder cable ...



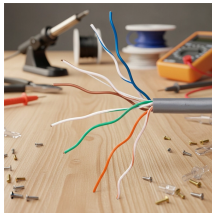
Cable channel B-Line series ventilated and non-ventilated channel cable tray for commercial and industrial instrumentation and small power cable management applications. Sides and bottoms open ...



Moody Price Perforated Channel is designed to be a tubing and cable support system which utilizes bolt together fittings to route tubing or cable runs in an industrial application. The standard material ...



Aluminum Cable Tray systems are lighter than steel cable tray and Certified CSA Cable Tray, UL listed, NEMA and certified. Because of their lighter weight aluminum cable trays are easier to install than ...



Used to support 12x4, 6x4, and 4x4 systems attaching to the top of the 19" wide version of the Panduit NF4PR84 4 post rack. Contains all hardware required to assemble bracket to the top of the 4 post ...



Over the past 55+ years, MP Husky US Cable Tray has engineered and manufactured the most reliable, highest quality, cost effective and innovative cable trays systems available.

Contact Us

For more information, pricing, or custom network solutions, please contact us:

Website: <https://www.hashherbcafe.co.za>

Email: hello@hashherbcafe.co.za

Phone: +27 63 814 7295

Address: 15 Galaxy Road, Linbro Business Park, Johannesburg, 2065, South Africa

This document is for informational purposes only. Specifications subject to change without notice.

