

## Aksai Trough-type Cable Tray



## Aksai Trough-type Cable Tray



Our solid bottom trough tray is used to carry smaller instrumentation, data communications, computer, telephone, control and fiber optic cable from one location to another.



MP Husky's cable tray selector for choosing the correct tray type (ladder, solid bottom, perforated, wire mesh) and size based on load, cable type and installation requirements.



Trough Cable Trays Specification: Custom order accepted. Trough Cable Trays offer moderate ventilation with added cable support frequency. It has the bottom configuration providing cable ...



It can be used for laying fully enclosed cables. It is most suitable for laying control cables for computer cables, communication cables, thermocouple cables and other highly sensitive ...



Explore all types of cable trays—ladder, perforated, basket, solid, and channel. Learn their uses, materials, pros, cons, and key differences.



Refers to the approximate height of a cable tray used for specifying. Selecting a specific height will show cable trays with that height, as well as cable tray accessories compatible with that height.



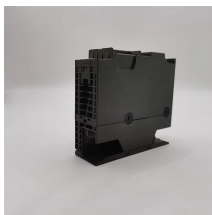
Our aluminum, I-beam ladder cable trays feature 3-inch tangents and are using connectable with our fittings and accessories. Aluminum ladder cable trays benefit from being lightweight and resistant to ...



Its “trough” design—often featuring a solid or partially enclosed bottom—provides an effective barrier against dust, moisture, and physical damage while also aiding in heat dissipation and cable ...



A professional guide to trough type cable trays. Explore load capacity charts, installation guidelines, advantages over ladder type, and key selection criteria for your project.



Cut, bend, and connect these wire mesh tray systems to route cable and hose in configurations such as curves, slopes, and tees. They are a lightweight option for organizing bundles of cable and hose ...

## Contact Us

For more information, pricing, or custom network solutions, please contact us:

Website: <https://www.hashherbcafe.co.za>

Email: [hello@hashherbcafe.co.za](mailto:hello@hashherbcafe.co.za)

Phone: +27 63 814 7295

Address: 15 Galaxy Road, Linbro Business Park, Johannesburg, 2065, South Africa

This document is for informational purposes only. Specifications subject to change without notice.

