

Aggregation Switch with 8 Electrical and 8 Optical Ports



Aggregation Switch with 8 Electrical and 8 Optical Ports



This compact managed Layer 2 switch offers eight 10G SFP+ ports and supports high-bandwidth links, making it ideal for aggregation switching to any UniFi ...



□Link Aggregation□The switch supports Static Link Aggregation and Dynamic Link Aggregation (IEEE 802.3ad) pports Up to 8 member ports are available in LAG.



Developed for long distance fiber installations. Equipped with eight SFP+ ports, two additional SFP28 ports and one RJ45 console port for configuration. With AXIS D8308 Fiber Aggregation Switch you ...



This manual mainly introduces the hardware, installation, and wiring steps of the Hardened Optical & Electrical Aggregation Switch (hereinafter referred to as “the device”).



This compact managed Layer 2 switch offers eight 10G SFP+ ports and supports high-bandwidth links, making it ideal for aggregation switching to any UniFi device that deploys various interconnect ...



Faster replacement and priority support, covered for 5 years. High-performance 10G SFP modules for optimal connectivity. An 8-port, Layer 2 switch made for 10G SFP+ connections.



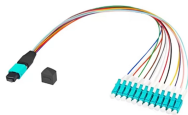
□Link Aggregation□The switch supports Static Link Aggregation and Dynamic Link Aggregation (IEEE 802.3ad) pports Up to 8 member ports are available in LAG.



The EPon OLT 8 port ET0816-H is a high-performance 1U GPON OLT designed for fiber-to-the-home (FTTH) and fiber-to-the-building (FTTB) deployments. With 8 PON ports and 8 uplink interfaces ...



Faster replacement and priority support, covered for 5 years. High-performance ...



It is developed to keep up with growing combination requirements, it allowing up to 8 switches to be seamlessly interconnected & managed as a single device.



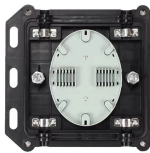
An 8-optical and 2-electrical all-GIGABit fiber aggregation switch provides eight 1.25G cascading optical ports and two 10/100/1000M adaptive RJ45 ports.



An 8-optical and 2-electrical all-GIGABit fiber aggregation switch provides eight ...



Based on Advanced security features and advanced quality of service (QoS), it can be used as a core distribution or access layer switch with high port density, and easy to manage. The managed 10G ...



Link aggregation is used to aggregate multiple physical ports to form a logical port for load balancing, bandwidth expansion, and port protection. Support static link aggregation.

Contact Us

For more information, pricing, or custom network solutions, please contact us:

Website: <https://www.hashherbcafe.co.za>

Email: hello@hashherbcafe.co.za

Phone: +27 63 814 7295

Address: 15 Galaxy Road, Linbro Business Park, Johannesburg, 2065, South Africa

This document is for informational purposes only. Specifications subject to change without notice.

