

# Aggregation Switch LPOOEM



## Overview

Equipped with all-fiber ports, Aggregation Series Switches deliver up to 25 Gbps. With features such as Static Routing, DHCP Server, ACL, IGMP Snooping, STP, LAG, and centralized cloud management, they offer a robust and reliable solution for the aggregation layer of SMB. An aggregation switch is a network device that consolidates traffic from multiple access switches, wireless access points, or other edge devices and forwards it to core switches or routers. It is essential for larger networks requiring efficient data flow. Select models. Provides 1G, 2. 5G, and 10G speeds for flexible customization, ensuring optimal performance, compatibility, and scalability Flexible interface options like copper, fiber, and PoE ensure seamless integration and cost-effective deployment Supports stacking for easier management, improved redundancy. LANCOM aggregation switches enable high-performance and hierarchical switch infrastructures to be set up and serve as the distribution basis for networking subordinate access switches. Equipped with future-proof fiber-optic and multi-Gigabit Ethernet (mGbE) ports as well as high-throughput uplink. This document provides campus networks typical configuration examples and feature typical configuration examples. "Campus Networks

Typical Configuration Examples" provides typical campus network networking modes and a variety of deployment examples.

## Aggregation Switch LPOOEM



Equipped with future-proof fiber-optic and multi-Gigabit Ethernet (mGbE) ports as well as high-throughput uplink and stacking ports, they form the basis for efficient and fail-safe networks. Stacking ...



What is the difference between an aggregate switch and a core switch? An aggregate switch consolidates traffic from access switches, while a core switch forms the backbone of the ...



Provides advanced Security ACLs for improved security, traffic control, and QoS, ensuring efficient and optimized networking.



Equipped with all-fiber ports, Aggregation Series Switches deliver up to 25 Gbps. With features such as Static Routing, DHCP Server, ACL, IGMP Snooping, STP, LAG, and centralized cloud management, ...



Aggregation switches set up stacks to implement device-level backup and increase the interface density and forwarding bandwidth. Before deploying QoS, ensure that the campus network is connected. For ...



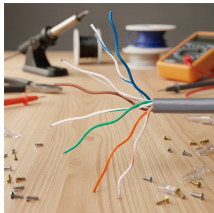
So, what is an aggregation switch? It is a networking tool called an aggregation switch that enables the consolidation of several network connections into a single link. This makes it possible to boost ...



Unlike the core switch, the aggregation switch can choose either the layer 2 switch or the layer 3 switch. When the layer 2 switches are selected, the routing and management strategy must ...



Engineered for industrial, enterprise, and FTTH environments, these switches deliver high bandwidth, advanced Layer 2/3 management, and robust reliability for mission-critical operations.



The primary function of an aggregation switch is to aggregate and forward data from multiple network devices, such as access switches, wireless access points, servers, and storage ...



Discover the role of aggregation switches. Explore differences between aggregation, access, and core switches, and choose the right model for your network.

## Contact Us

For more information, pricing, or custom network solutions, please contact us:

Website: <https://www.hashherbcafe.co.za>

Email: [hello@hashherbcafe.co.za](mailto:hello@hashherbcafe.co.za)

Phone: +27 63 814 7295

Address: 15 Galaxy Road, Linbro Business Park, Johannesburg, 2065, South Africa

This document is for informational purposes only. Specifications subject to change without notice.

