

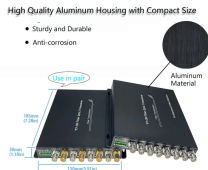
## Afghanistan power distribution box enclosure



## Afghanistan power distribution box enclosure



Superfine Waterproof Electrical Distribution Board for Afghanistan. Size: common, Type: Distribution Box Electrical Boxes, Thickness: 1.2mm. OEM offered.| Alibaba



Musaver Edris Safi Electric Products Co. manufactures (produces) Meter Boxes with high quality on customers'' demands. These Meter Boxes are of excellent quality, and with cool and hot weather has ...



We are a leading supplier of electrical enclosures in the Middle East, manufacturing according to ADDC, DEWA, SEW, and FEW specifications. Our product range includes sheet steel, aluminum, and ...



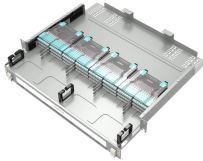
A distribution board (or panel / board) is a component of an electricity supply system which divides an electrical power feed into subsidiary circuits, while providing a protective fuse or circuit breaker for ...



A distribution board (also known as panelboard, breaker panel, electric panel, DB board or DB box) is a component of an electricity supply system that divides an electrical power feed into subsidiary circuits ...



HDT offers Power Distribution Units (PDUs) and Utility Distribution Boxes (UDBs) in various configurations. A Power Distribution Unit (PDU) allows two generators to be synchronized, and both ...



The enclosure is made of bent steel plates, featuring a compact structure, easy maintenance, and flexible circuit scheme combinations. Besides air circuit breakers and fuses for circuit protection, the ...



Afghanistan power strips and PDU power distribution units for surface mount, rack mount and general purpose applications. Multiple outlet power strips are manufactured in accordance to Afghanistan ...



Browse power distribution boxes with circuit breaker protection and multiple outlet configurations. Shop durable solutions for construction and emergency use.



A distribution board (also known as panelboard, breaker panel, electric panel, DB board or DB box) is a component of an electricity supply system that divides an ...

## Contact Us

For more information, pricing, or custom network solutions, please contact us:

Website: <https://www.hashherbcafe.co.za>

Email: [hello@hashherbcafe.co.za](mailto:hello@hashherbcafe.co.za)

Phone: +27 63 814 7295

Address: 15 Galaxy Road, Linbro Business Park, Johannesburg, 2065, South Africa

This document is for informational purposes only. Specifications subject to change without notice.

