

Aerial Optical Cable Left Line Right Line



Aerial Optical Cable Left Line Right Line



Deploying fiber above ground on poles or towers removes the need for underground digging and is particularly useful when the ground is uneven, rocky or both. Aerial installation is generally much less ...



Most utility cables have a very strong resemblance to each other because the majority of them have the same outer covering - black polyethylene. This can ...



Fiber optic cable sequential numbers are required at each pole location and vault wall. Sequential numbers will identify conduit length, and slack left in vaults and at poles.



SkyWrap provides a retro-fit solution for installing a fiber optic cable on overhead power lines. The cable is small and imposes minimal additional load on the overhead line conductors, poles and towers.



An outside plant cable installation may require several different types of cables depending on the method of installation and the route of the cable plant, e.g. where some cables are installed ...



This document provides standards and guidelines for aerial installation of fiber optic cables including pole setting, grounding, cable runs between poles, and fiber optic cable handling.



It incorporates both a steel messenger and the core of a standard optical fiber cable into a single jacket of figure-eight cross-section. The combination of strand and optical fiber into a single cable allows ...



It is important when installing aerial optical fibre cable lengths to make proper arrangement for an adequate extra length of cable at a pole position for testing and jointing.



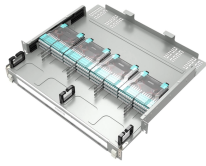
Fiber Optic Splice cases. A typical FOCA splice case will have the majority, if not, all cables entering from one side of the splice case, with the opposing end being unoccupied (Figure 4-11).



OFS installation practice for aerial fiber optic cable: design, span rules, overlashing, precautions, and installation methods.



The document discusses four methods for installing aerial optical fiber cables: figure 8 cables, lashed cables, ADSS cables, and OPGW cables. It provides details on ...



Messenger strand and lashing wire creates a flexible infrastructure, allowing numerous cable designs as well as later additions for new fiber connections. Once strands are placed, fibers can be attached up ...



1.1 This practice covers the basic guidelines for installation of aerial fiber-optic cable. It is intended for personnel with prior experience in planning, engineering, or placement of aerial cable.

Contact Us

For more information, pricing, or custom network solutions, please contact us:

Website: <https://www.hashherbcafe.co.za>

Email: hello@hashherbcafe.co.za

Phone: +27 63 814 7295

Address: 15 Galaxy Road, Linbro Business Park, Johannesburg, 2065, South Africa

This document is for informational purposes only. Specifications subject to change without notice.

