

Advanced AI Server Configuration

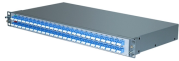


Overview

In this comprehensive guide, we will explore the key factors to consider when selecting an AI server setup, including understanding your AI workload requirements, determining the right hardware configuration, choosing the right operating system, selecting the right storage. In this comprehensive guide, we will explore the key factors to consider when selecting an AI server setup, including understanding your AI workload requirements, determining the right hardware configuration, choosing the right operating system, selecting the right storage. In this overview, Jun Yamog guides you through the essentials of building a high-performance AI server, from selecting the right GPUs to optimizing thermal management. An extremely powerful professional AI and HPC solution built on next-gen Blackwell Tensor core GPUs - NVIDIA B300. An AI Server can be configured in several ways: install. Admin Portal: Use the Admin Portal to add, edit, or remove AI Providers. Modern AI models are data-hungry, computation-heavy beasts that need specialized hardware just to function, let alone perform at their best. That's the job of an AI server—a custom-built system that keeps AI applications fast, scalable, and efficient. An AI server's architecture is all about. Organizations today require

High Performance Servers specifically designed to handle GPU-accelerated computing. This guide explains how to build a scalable, reliable, and efficient Server with GPU capabilities — tailored for AI training, inference, simulation, and data-intensive research.

Advanced AI Server Configuration



In this overview, Jun Yamog guides you through the essentials of building a high-performance AI server, from selecting the right GPUs to optimizing thermal management.



Whether you're deploying AI in your business, tinkering with a project, or just want to understand the tech shaping our world, this guide discusses what goes into AI server architecture, ...



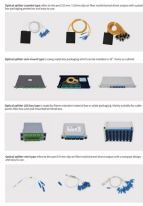
AI Server configurator is a tool that enables advanced comparison and configurations of powerful HPC systems built on latest NVIDIA GPUs.



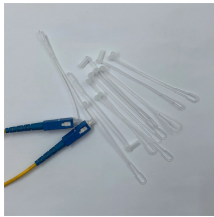
Explore key considerations for AI servers and how to design them to support AI workloads optimally.



This guide explains how to build a scalable, reliable, and efficient Server with GPU capabilities — tailored for AI training, inference, simulation, and data-intensive research environments.



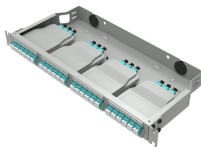
With Claris FileMaker 2025, you can now run your own AI Model Server using local infrastructure. Whether you're integrating text generation, text ...



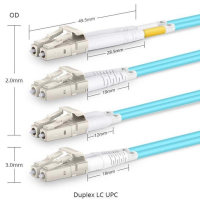
Discover how to choose the right AI server setup for your workload. Explore hardware, storage, OS, networking, scalability, security, and management best practices.



This guide covers the nuances of server setup, software configuration, and system management to effectively optimize AI workloads, ensuring that the infrastructure is not only robust but also cost ...



AI, or artificial intelligence, is changing the way organizations and businesses handle data by incorporating automation of complex calculations, introducing new advanced applications, and ...



With Claris FileMaker 2025, you can now run your own AI Model Server using local infrastructure. Whether you're integrating text generation, text embedding, or image embedding ...



.env File: Update the .env file with your API keys and run the AI Server for the first time. Admin Portal: Use the Admin Portal to add, edit, or remove AI Providers and generate AI Server API keys.

Contact Us

For more information, pricing, or custom network solutions, please contact us:

Website: <https://www.hashherbcafe.co.za>

Email: hello@hashherbcafe.co.za

Phone: +27 63 814 7295

Address: 15 Galaxy Road, Linbro Business Park, Johannesburg, 2065, South Africa

This document is for informational purposes only. Specifications subject to change without notice.

