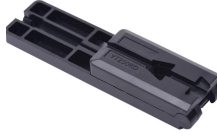


AI Server Bidding Results



AI Server Bidding Results



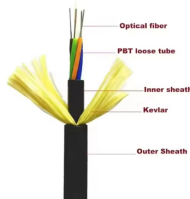
The AI server market is experiencing rapid expansion, driven by rising demand from cloud providers to support hyperscale environments and generative AI workloads. Advancements in GPUs, ASICs, and ...



Global shipments of AI servers are projected to increase at a CAGR of 27.2% during 2022-2027. By 2027, AI servers are forecasted to account for around 19% of the total annual server shipments.



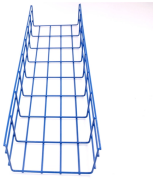
According to a recent survey, AI servers comprised approximately 23% of the total server market in 2023, reflecting a significant presence in the industry. This share is anticipated to grow substantially ...



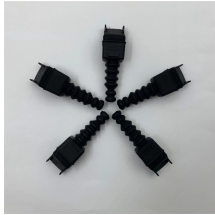
HPE has secured a deal exceeding \$1 billion to build AI servers for the X social platform previously known as Twitter, Bloomberg reports. The company beat out prominent AI server suppliers...



Cloud service providers and data center operators are playing a critical role in scaling AI capabilities, while innovation in cooling technologies and energy-efficient designs continues to enhance server ...



Explore the best AI auction software for automated bidding, real-time analytics, and smarter auction management. Discover top AI Auction tools to streamline auction workflows.



TrendForce's latest analysis of the AI server market shows that demand from CSPs and sovereign cloud deployments will remain robust through 2026. This momentum will fuel stronger pull ...



DIGITIMES Research anticipates that in 2023, over 80% of the global shipments of high-end AI servers from major CSPs and server vendors will be concentrated among the top five titans.



Dell Q4 FY 2026 earnings show AI server scaling and ISG strength, with guidance pointing to continued AI-led growth in FY 2027.



The AI server market was valued at USD 128 billion in 2024 and is expected to grow at a CAGR of 28.2% between 2025 and 2034, driven by the explosive enterprise AI adoption and proven return on ...

Contact Us

For more information, pricing, or custom network solutions, please contact us:

Website: <https://www.hashherbcafe.co.za>

Email: hello@hashherbcafe.co.za

Phone: +27 63 814 7295

Address: 15 Galaxy Road, Linbro Business Park, Johannesburg, 2065, South Africa

This document is for informational purposes only. Specifications subject to change without notice.

