

A Brief Introduction to Revit Cable Trays



Overview

This lesson walks through how to start a project and properly set up for Electrical Cable Tray design in Revit 2025. It focuses on template selection, component availability, and basic setup steps. Start With the Right Template Opens a new project and stresses using the. Review the basics of placing cable tray, add vertical cable tray, and place cable tray and fittings horizontally on a wall. We are also modifying cable tray fittings to work in tight spaces. Your browser does not support the video tag.



A Brief Introduction to Revit Cable Trays



Review the basics of placing cable tray, add vertical cable tray, and place cable tray and fittings horizontally on a wall. We are also modifying cable tray fittings to work in tight spaces.



In this video, learn how to run a ladder cable tray. You can run the tray at different elevations and create T-intersections. Explore the cable tray system configurations and see all of...



Walk through placing cable tray in Revit MEP—loading fittings, setting routing preferences, drawing runs across floors, and resolving clashes with ducts and conduit.



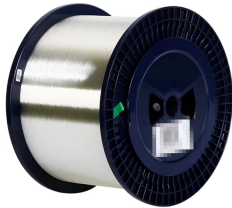
This application guide is intended to assist users in incorporating Pemsas' insulating cable tray systems into their own projects. To do so, users must download the required RVT and RFA files ...



Learn how to set the middle elevation, draw through the room, avoid conflicting elements, and create a detailed and clear visualization of the cable ...



From industrial cable management systems to office environments, houses of worship, and even performance venues, you can use the cable tray Revit families available through BIMsmith Market to ...



This lesson walks through how to start a project and properly set up for Electrical Cable Tray design in Revit 2025. It focuses on template selection, component availability, and basic setup steps.



By the end of this tutorial, you'll have the skills and knowledge to confidently create detailed electrical cable tray drawings in Revit, helping you streamline your design process and ensure...

DATA ADJUSTABLE, EASY TO USE



SET INCREASE DECREASE POWER SWITCH

Design cable trays or conduits with the selected manufacturer and electrical system. The height and side reference is taken into account. If you continue a conduit or cable tray, the dimensions of the existing ...



Learn how to set the middle elevation, draw through the room, avoid conflicting elements, and create a detailed and clear visualization of the cable tray's route.

Contact Us

For more information, pricing, or custom network solutions, please contact us:

Website: <https://www.hashherbcafe.co.za>

Email: hello@hashherbcafe.co.za

Phone: +27 63 814 7295

Address: 15 Galaxy Road, Linbro Business Park, Johannesburg, 2065, South Africa

This document is for informational purposes only. Specifications subject to change without notice.

