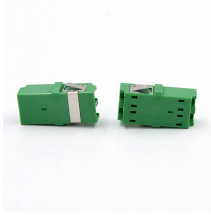


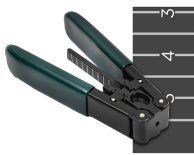
48-core OPGW hardware for IDC data centers



48-core OPGW hardware for IDC data centers



The IEEE 1138 Test Standard for OPGW includes a series of tests that require suitable hardware to demonstrate system performance. System tests include Tensile Strength, Vibration Test, and ...



Wedge Dead End for Optical Ground Wire (OPGW) evices . The wedge dead end is sold mostly assembled and only requires connecting three components (the body, top wedge and locking pin) ...



This is designed for splicing ADSS, OPGW cables and the normal cables to house the fiber core splices to outdoor intermediate optical cable leading to the patch panel in the control room.



OPGW shall be accordance with applicable standard of OPGW and requirement of customer. The following test items shall be carried out according to corresponding reference.



The OPGW 48-core is almost always the fiber cable of choice for major undertaking ventures where systems protection and communication capacity are required. They are several types of construction ...



Beginning with optical ground wire (OPGW), introduced in 1984 as AFL's flagship product, the line now spans to cabling solutions being used in the world's harshest environments, including those above ...



The multi loose tube type is designed mostly for very high fiber count requirement over 48 with the maximum fiber count reaching 144. The multi loose tube type can meet the requirement of huge ...



APAR has integrated these core strengths in its comprehensive OPGW solution that includes Optical Fiber Composite Ground Wire and related hardware. Apar's OPGW & OFC are approved by BSNL, ...



Home / Products / Conductor Accessories / Fiber Optic Cable Hardware / OPGW Hardware



It holds up to 144 fibers, with a storage disk capacity of 48 cores, allowing substantial flexibility in fiber management. The design ensures that fibers are securely held while minimizing any ...

Contact Us

For more information, pricing, or custom network solutions, please contact us:

Website: <https://www.hashherbcafe.co.za>

Email: hello@hashherbcafe.co.za

Phone: +27 63 814 7295

Address: 15 Galaxy Road, Linbro Business Park, Johannesburg, 2065, South Africa

This document is for informational purposes only. Specifications subject to change without notice.

