

404 optical cable



404 optical cable



Opti-Core™ Fibre Optic Indoor-Outdoor Armoured Cable 48 to 144-Fibres, EuroClass Cca and B2ca for EMEA A T A S H E E T



IEC 60794-1-404:2022 defines a test standard to determine the optical performance and temperature characteristics of a hybrid cable under the maximum current. This document applies to optical phase ...



Manufactured with the highest quality Corning optical fiber glass and terminated with durable 1.25mm ceramic ferrule LC fiber patch cable connectors. Industry standard yellow SM jacket with 2mm ...



Manufactured with the highest quality Corning optical fiber glass and terminated ...



This is a Gigamon Systems® CBL-404 Compatible 40GBase-AOC QSFP+ to QSFP+ active optical cable that operates over active fiber with a maximum reach of 4m. It has been programmed, uniquely ...



Fire resistant optical fibre cable, QFCI - code F101 NEK TS 606:2016 (available also in MUD protected version).



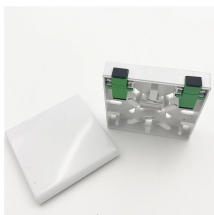
All connector types are available up to 144 count fiber cable, in custom colors and lengths. Options include identification labels, pulling eyes and spools for long assembly lengths.



This part of IEC 60794 applies to optical phase conductor (OPPC). An optical phase conductor is made of multiple metallic wires that are exposed to the environment without any insulating or protective ...



They have also been widely accepted and used for other cables, in particular optical fibre cables, communication and control cables and cables for ships and offshore applications.



BS EN IEC 60794-1-404:2022: The Standard for Optical fibre cables - Generic specification. Basic optical cable test procedures. Electrical test methods. Current-temperature test, ...



IEC 60794-1-404:2022 defines a test standard to determine the optical performance and temperature characteristics of a hybrid cable under the maximum current. This document applies to optical phase ...

Contact Us

For more information, pricing, or custom network solutions, please contact us:

Website: <https://www.hashherbcafe.co.za>

Email: hello@hashherbcafe.co.za

Phone: +27 63 814 7295

Address: 15 Galaxy Road, Linbro Business Park, Johannesburg, 2065, South Africa

This document is for informational purposes only. Specifications subject to change without notice.

