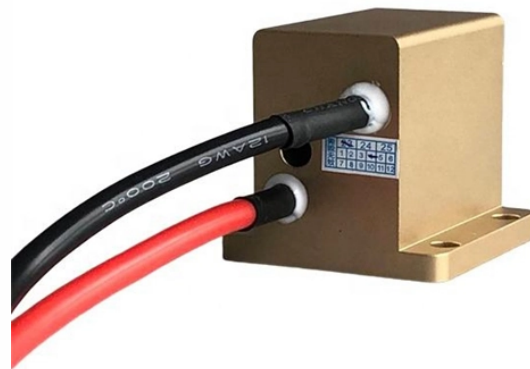


4 Optical 8 Electrical Industrial Switch PoE



4 Optical 8 Electrical Industrial Switch PoE



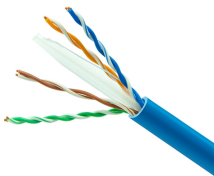
Featuring 4*10/100/1000M IEEE 802.3 af/at PoE injector ports + 4*100/1000M SFP optical ports, the LK6008P4C4F is a LINKOH industrial grade switch. This 8 ports PoE switch with Lay 2+ management ...



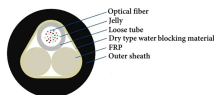
Product Summary: AFITSEP Industrial-Grade Layer 2 Managed 4-Fiber 8-Electric Ethernet PoE Switch Industrial Ethernet Switches (4 Optical 8 Electrical PoE) From AFITSEP



The EDS-4008 Series is a range of 8-port managed Fast Ethernet switches with the option for four 1 Gbps uplink ports or two 100M ST/SC fiber-optic ports. This Series also offers models with four ...



L-com's WM8-4G-4GP+ is an 8 port, PoE+ capable, triple speed industrial Ethernet switch offering a cost-effective, PoE friendly solution for connecting devices over a gigabit network.



BL169GMP-SFP is a network managed industrial Ethernet POE switch that complies with FCC, CE and RoHS standards. Support 4 gigabit optical ports and 8 gigabit electrical ports; Support Ethernet layer ...



With Power over Ethernet (PoE): The 1000 series unmanaged PoE switches enable you to supply up to eight end devices with power and data via the same Ethernet cable. Suitable for a wide range of ...



L2+ managed industrial PoE fiber switch with 4*10/100/1000M RJ45 ports and 4*100/1000M uplink SFP fiber ports. Port 1-4 can support IEEE 802.3 af/at PoE standard. It can support dual DC redundant ...



BL169GMP-SFP is a network managed industrial Ethernet POE switch that ...



Description BL169GMP-SFP is a managed industrial Ethernet PoE switch with 4 Gigabit optical ports and 8 Gigabit electrical PoE ports, compliant with FCC, CE, and RoHS standards. It supports Layer 2 ...



FLEXIBLE POWER: Rugged/hardened GbE network switch can be hardwired using terminal block (48-56VDC) power or by Type-M barrel plug (48-56V); terminal block kit included



This managed switch features eight PoE ports capable of powering compatible PoE devices, such as VoIP phones and IP surveillance cameras, without the expense and effort of running separate power ...

Contact Us

For more information, pricing, or custom network solutions, please contact us:

Website: <https://www.hashherbcafe.co.za>

Email: hello@hashherbcafe.co.za

Phone: +27 63 814 7295

Address: 15 Galaxy Road, Linbro Business Park, Johannesburg, 2065, South Africa

This document is for informational purposes only. Specifications subject to change without notice.

