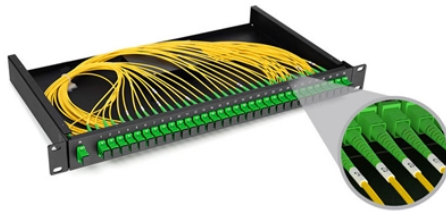


3C Testing for Low-Voltage Complete Sets of Equipment



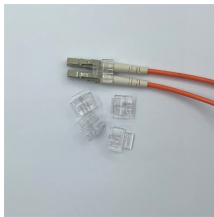
Overview

Defines mandatory and additional testing requirements for voltage, current, polarity, insulation resistance, neutral integrity and phase rotation on the low voltage mains and service connections. 3Ctest recently overtook Ametek CTS (Teseq & EM Test) for market share in China. Rent, buy or lease 3ctest EMC Test Equipment. The EMC Shop specializes in EMI, CI, and RFI test and compliance. The EDS MAX16 is 3CTEST's fourth - generation electrostatic discharge simulator in compliance with IEC 61000 - 4 - 2 2025 and other standards. Mandatory testing of the low voltage network and connected installations must be conducted to mitigate. Three voltage classes of equipment are detailed within the ANSI/NETA ECS The ANSI/NETA Standard for Electrical Commissioning Specifications for Electrical Power Equipment and Systems was developed for use by those responsible for testing and commissioning newly installed or retrofitted electrical. So the purpose of electrical installation testing is primarily to ensure that people and goods are kept safe and are protected in the event of a fault.

3C Testing for Low-Voltage Complete Sets of Equipment



Equipment shall be subjected to functional testing to verify that it is properly mounted, adjusted and installed in accordance with the relevant requirements of the IEC 60364 series.



Low voltage test instruments must be selected, used, stored and maintained in a way that minimises the chance of failure while testing on energised sources and prevents testing from causing hazards to ...



The EDS MAX16 is 3CTEST's fourth - generation electrostatic discharge simulator in compliance with IEC 61000 - 4 - 2 2025 and other standards. ESD Generator EDS MAX30 is a state-of-the-art ...



This method statement outlines the procedures for testing and commissioning low voltage equipment supplied by Schneider Electric Egypt. It emphasizes the importance of safety precautions, ...



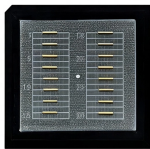
Inspection and test procedures for low-voltage cables: visual checks, electrical tests, torque values. Ensure cable safety and performance.



In situations where a test is required to check the voltage leak of a pole, where low voltage (415 volts) is the overhead supply, the following procedure is recommended.



This document provides advice and guidance on how to achieve this. This fourth edition includes current test equipment and references and links to further guidance have been updated. The...



This document aids in ensuring safe, reliable operation of electrical power equipment and systems. It is essential to commission newly installed and retrofitted electrical power equipment and systems.



Rent, buy or lease 3ctest EMC Test Equipment. The EMC Shop specializes in EMI, CI, and RFI test and compliance.

Contact Us

For more information, pricing, or custom network solutions, please contact us:

Website: <https://www.hashherbcafe.co.za>

Email: hello@hashherbcafe.co.za

Phone: +27 63 814 7295

Address: 15 Galaxy Road, Linbro Business Park, Johannesburg, 2065, South Africa

This document is for informational purposes only. Specifications subject to change without notice.

