

24-core outdoor optical cable national standard specifications



24-core outdoor optical cable national standard specifications



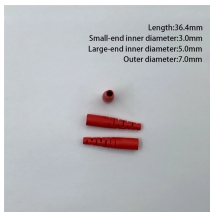
This cable is suitable for underground installation, overhead lashed to a guy wire, or secured to a building or other permanent outdoor structure. The drawback of the gel-filled cable is that it is ...



There is no support or messenger wire required, allowing installation to be achieved in a single pass, dramatically reducing installation time and cost while delivering high-speed internet to rural areas. ...



SABA 24 cores distribution fiber optic cable is constructed with loose tube fibers, aramid yarn strength member, LSZH is metal free outdoor cable . Quality of the product is tested according to IEC Standards.



Fiber Optic Outside Plant Cable, 24-core, ECSS (Electro Chrome Coated Steel) Armored, Loose-tube, Gel-filled, 9/125 μm , OS2, Singlemode, Black cable jacket



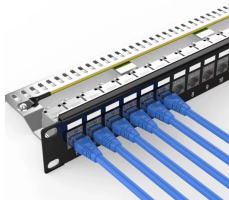
SPECIFICATIONS in up to 24 fibres and have an all-dielectric loose tube construction. It shall be suitable for indoor applications, complying with IEC standards for low smoke / zero halogen and ...



Tight Buffer Distribution Fiber Optic Cable
Cable Cross Section Scope This document establishes the specification requirements for a 24 (tw. nty-four) fiber indoor/outdoor distribution armored fiber optic ...



This fiber optic indoor/outdoor cable is designed to be flexible enough to be used indoors & are rugged enough to be used in general outdoor applications.



The plenum distribution fiber optic cable uses high performance components and construction and is UL Listed in accordance with NEC section 770.179 (a) for use in ducts, plenums and air-handling spaces.



These plenum jacketed cables are suitable for indoor and outdoor installations in conduit, below the frost line. The cables are designed for operation across wide temperature variations typically addressed by ...



This is a black 1000 foot spool of indoor/outdoor plenum rated fiber optic distribution cable intended for long distance runs at high speeds. It is composed of 24 singlemode fibers (9 micron core) inside a ...

Contact Us

For more information, pricing, or custom network solutions, please contact us:

Website: <https://www.hashherbcafe.co.za>

Email: hello@hashherbcafe.co.za

Phone: +27 63 814 7295

Address: 15 Galaxy Road, Linbro Business Park, Johannesburg, 2065, South Africa

This document is for informational purposes only. Specifications subject to change without notice.

