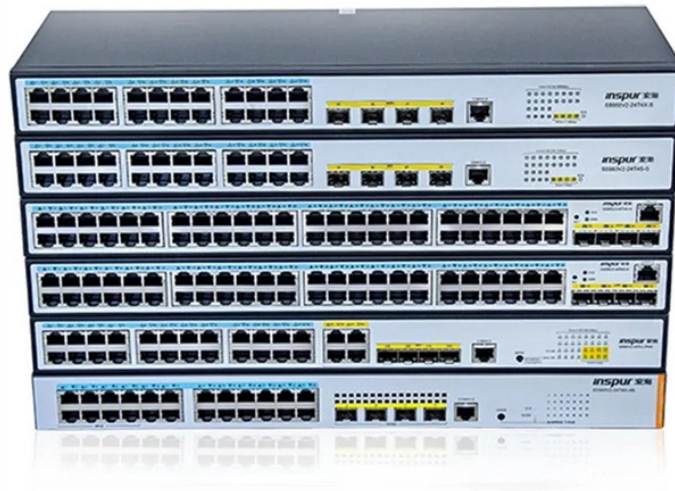


24-core optical cable tester



24-core optical cable tester



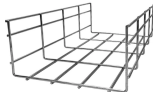
When it comes to Fiber Optic Cable Testing Instruments, you can count on Grainger. Supplies and solutions for every industry, plus easy ordering, fast delivery and 24/7 customer support.



Kingfisher's unique and innovate MPO Visual Cable Verifier Kit is a quick, versatile and inexpensive way to visually check MPO cable installations and patch leads for polarity and continuity, and overall end ...



It supports 24-core MPO polarity and loss testing and is compatible with 12-core MPO. Featuring a 5.6-inch color touch screen and an integrated MPO terminal detector, this tester ensures connector ...



Designed to accelerate your testing process and deliver accurate, reliable results. This versatile tool is crafted for professionals who demand precision in every fiber optic test.



When you need to test fiber optic cables in the field, you'll want a tester that handles multiple functions without slowing you down. You can choose from devices that combine optical ...



From automated fiber end-face inspection, to length/loss measurements and OTDR testing, testing MPO with VIAVI solutions equip technicians with the ability to ensure network performance without the ...



If done properly, testing fiber optic cable with reliable tools can yield significant savings in regard to time and money. We supply a variety of Fiber Testers to assist you in establishing a thriving fiber optic ...



The MPO-24 optical fiber switch allows users to verify some or all fibers in a multi-fiber connector in a single test, saving both time and money by automating the scanning process without the need to ...



JW3502 MPO integrated tester integrates the basic functions of MPO testing, including the light source, optical power meter, end detector and other functional modules, supporting 24-core MPO polarity ...



Shop fiber optic test and installation equipment, including OTDRs, OLTS certifiers, fusion splicers, and fiber cable assemblies for professional network work.

Contact Us

For more information, pricing, or custom network solutions, please contact us:

Website: <https://www.hashherbcafe.co.za>

Email: hello@hashherbcafe.co.za

Phone: +27 63 814 7295

Address: 15 Galaxy Road, Linbro Business Park, Johannesburg, 2065, South Africa

This document is for informational purposes only. Specifications subject to change without notice.

