

24-core ODF patch panel Huijue



24-core ODF patch panel Huijue



China leading provider of Fiber Optic Patch Panel & Enclosure and Fiber Patch Cables, Hunan Twilight Optic Technology Co., Limited is Fiber Patch Cables factory.



Company Introduction:Established in 2001, Shanghai Huijue Network Communication Equipment Co., Ltd (HJ Network for short) is the leading manufacturer and solution provider for telecom and ...



Telhua's 4U MPO/MTP ODF rock mount fiber optic patch panel with 24-core ...



As a manufacturer of fiber management solutions, we supply this 24-core ODF patch panel for high-density environments. The 1U rack-mount design saves space while providing organized fiber ...



Gcabling is a leading fiber optic patch panel manufacturer & supplier. We can manufacture and supply a wide range of ODF with 20+ years of experience.



24 cores ODF ATT-ODF-24 provides efficient cable connections between outside plant cables and equipment inside the buildings and communications facilities. Box integrates fiber splicing, storage ...



Gcabling is a leading fiber optic patch panel manufacturer & supplier. We can ...



It provides an efficient and organized way to manage your fiber optic network, ensuring reliable connectivity and communication. The 24 core capacity of this patch panel is suitable for medium ...



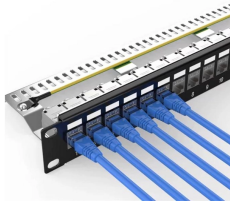
High-density Sliding Fiber Optic Patch Panel for FTTH, data centers & telecom racks. Supports 12-96 fibers, 1U-4U design, low loss ≤ 0.3 dB, IP20/IP65 optional, IEC 61753 & GR-326 compliant.



Optical fiber distribution frame (ODF) is used for terminating and distributing central office trunk optical cables in optical fiber communication systems, and can easily realize the connection, distribution and ...



Featuring 24pcs LC duplex adapter (or 24pcs SC Simplex adapter) ports, this patch panel supports up to 48 optical fibers and is ideal for structured cabling systems in data centers and ...



Telhua's 4U MPO/MTP ODF rock mount fiber optic patch panel with 24-core cassette delivers high density, reliability, and fast installation for data centers. Compliant with IEC, TIA/EIA, RoHS standards.

Contact Us

For more information, pricing, or custom network solutions, please contact us:

Website: <https://www.hashherbcafe.co.za>

Email: hello@hashherbcafe.co.za

Phone: +27 63 814 7295

Address: 15 Galaxy Road, Linbro Business Park, Johannesburg, 2065, South Africa

This document is for informational purposes only. Specifications subject to change without notice.

