

200200 Optical Cable Conduit



200200 Optical Cable Conduit



Riser-Gard Fiber Optic Corrugated Conduit, Size 1-1/4 Inch, Outer Diameter 1.67 Inch, Inner Diameter 1.31 Inch, Wall Thickness 0.080 Inch, Length 200 Feet, Material PVC, Color Orange, with Pull Tape



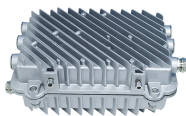
Check each product page for other buying options. This product has sustainability features recognized by trusted certifications. Carbon emissions from the lifecycle of this product were measured, reduced ...



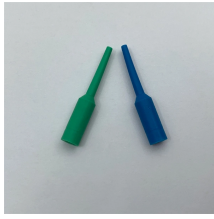
Browse wire loom tubing designed for cable management and protection. Ideal for automotive, home, and industrial applications.



The Opti-Com® multi-duct conduit system gets your new fiber optic cable on-line quicker and more economically than conventional 4" duct and pulled-in reeled inner duct.



HDPE conduit is often Allwire's recommended solution for reliable fiber optic protection, especially in underground and buried cable applications. We find it suitable for a wide range of ...



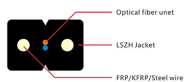
The conduit protects the fragile fiber optic cables from environmental factors and physical damage, ensuring their longevity and optimal performance. Keep in mind that conduit size information in this ...



The conduit protects the fragile fiber optic cables from environmental factors and physical damage, ensuring their longevity and optimal performance. In this comprehensive guide, we will walk you ...



Fiber In Conduit (FIC) is a durable high-quality product for direct burial and horizontal directional drilling applications. FIC protects the cable from effects of soil, chemical and rodent damage during ...



Choose from our selection of fiber-optic cable conduit in a wide range of styles and sizes. Same and Next Day Delivery.



Utility Pipe Supply provides contractors with fiber optic conduit designed to protect delicate fiber cables during installation and long-term use. Built for durability and precision, this conduit shields cables ...

Contact Us

For more information, pricing, or custom network solutions, please contact us:

Website: <https://www.hashherbcafe.co.za>

Email: hello@hashherbcafe.co.za

Phone: +27 63 814 7295

Address: 15 Galaxy Road, Linbro Business Park, Johannesburg, 2065, South Africa

This document is for informational purposes only. Specifications subject to change without notice.

