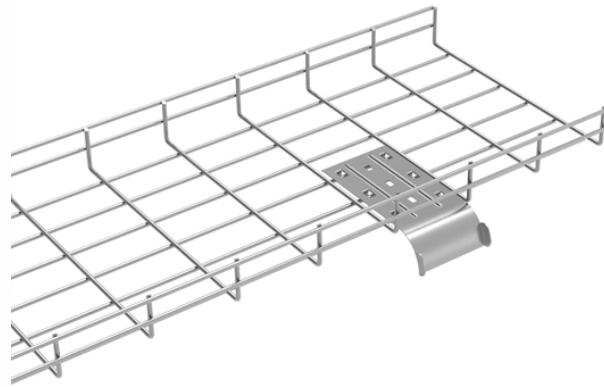


16-port industrial switch 365



16-port industrial switch 365



Come-Star offers a robust collection of 16-port rugged Ethernet switches, engineered for industrial applications that demand reliability and performance. Our hardened switches are built to withstand ...



WAGO's 16-Port Industrial Switch meets the "Energy Efficient Ethernet" standard. Per the IEEE-802.3az standard, the energy consumption is automatically adjusted to the load on the network. Thus, the 16 ...



This space-saving switch transmits data over a Gigabit Ethernet network. Sixteen auto-negotiating 10/100/1000 Mbps ports send data only to the devices designated to receive it, which improves the ...



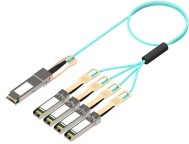
PG5-1600 16-Port Industrial Gigabit PoE+ Managed Ethernet Switch #100Mbps Copper #1000Mbps Copper #PoE



The Sixnet® 16-port Managed Industrial Ethernet Switch enables fast Ethernet connectivity for industrial equipment in extreme industrial settings. Rugged and high-performing with a range of advanced ...



WAGO industrial lean managed Ethernet switch, 16 ports, (16) Ethernet Gigabit (RJ45) port (s), Modbus TCP and SNMP, -40 to +60 deg C, metal housing, IP30, 35mm DIN rail mount. Ordering window ...



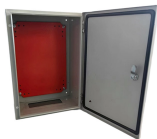
This Industrial switch features copper Gigabit ports for high-speed device connections, and Gigabit SFP slots that support 1000Base-FX modules for long distance fiber networking applications.



The iGigaSwitch 16xx E+ HW5 family provides great flexibility in network design - it has 16 Gigabit ports including 4, 8 or 12 SFP ports. The iGigaSwitch is designed for DIN-Rail mounting and comes with ...



Fanless IP40 rated 16 ports Layer 2 managed industrial switches, operating temperature -40 to 85° C to satisfy any special needs of industrial automation, outdoor applications and harsh weather conditions.



This space-saving switch transmits data over a Gigabit Ethernet network. Sixteen ...



The Sixnet® 16-port Managed Industrial Ethernet Switch enables fast Ethernet connectivity for industrial equipment in extreme industrial settings. Rugged and ...

Contact Us

For more information, pricing, or custom network solutions, please contact us:

Website: <https://www.hashherbcafe.co.za>

Email: hello@hashherbcafe.co.za

Phone: +27 63 814 7295

Address: 15 Galaxy Road, Linbro Business Park, Johannesburg, 2065, South Africa

This document is for informational purposes only. Specifications subject to change without notice.

