

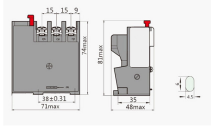
16-core single-mode fiber identification



Overview

This guide explains the latest EIA/TIA-598-D fiber color-coding standard used to identify fiber types, inner fiber sequences, and connector polish styles. With clear tables and updated details, it serves as a comprehensive reference for technicians handling modern fiber optic. Identifying Single-Mode (SMF) vs. Multimode (MMF) SFP modules involves a cross-referencing protocol of physical bail colors, EEPROM telemetry, and wavelength specifications. Precise verification prevents "Ghost Links" and Mode Field Diameter (MFD) mismatches that degrade 800G AI fabric performance. To determine if your SFP (Small Form-factor Pluggable) module is single mode or multimode, you can look for specific markings or labels on the module itself. Typically, single mode SFP modules are labeled as "SM" or "single mode," while multimode modules may be labeled as "MM" or "multimode. In fiber optics, color isn't for decoration; it's a critical safety and efficiency tool. The TIA-598 standard (specifically.

16-core single-mode fiber identification



This process enables optimum fiber performance, reliability and durability, even in the harshest environments. Draka Advanced Plasma and Vapor Deposition (APVDTM) manufacturing process ...



Discover how to identify if your SFP (Small Form-factor Pluggable) module is single-mode or multimode. Look for SM or MM labels, check color coding, and consult manufacturer specs ...



The cable is designed and tested to meet the applicable requirements of ANSI/ICEA Standard for Fiber Optic Outside Plant Communications Cable, ANSI/ICEA S-87-640-2023 and GR-20-CORE.



Learn the latest EIA/TIA-598 fiber color codes for jackets, inner fibers, and connectors. A complete guide for accurate fiber identification.



Single mode fibers are often identified by their yellow sheathing, distinguishing them from the orange or aqua jackets of multimode fibers. This specialty cable excels in high-speed, long ...



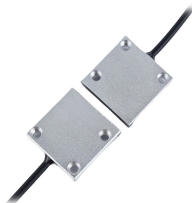
This technique enables bidirectional communications over a single strand. Passive CWDM uses a prism and bandpass filter to split the wavelengths without power, and is often used with fiber to the home ...



You'll learn how to identify single-mode vs. multimode at a glance, trace individual strands in a 144-fiber bundle, and avoid the critical error of mixing connector types.



Confused about whether your SFP is single-mode or multimode? Learn the differences, visual cues, wavelength ranges, and compatibility to avoid mismatched fiber connections and costly ...



These measurements are not the actual outer diameter of the cable; they correspond directly to the optical fiber itself. This notation indicates that you are looking at either OM2, OM3, or OM4, as they ...



The two main types — Single Mode (SM) and Multimode (MM) — differ in construction, performance, and application. This guide explains how to identify them by appearance, labeling, and ...

Contact Us

For more information, pricing, or custom network solutions, please contact us:

Website: <https://www.hashherbcafe.co.za>

Email: hello@hashherbcafe.co.za

Phone: +27 63 814 7295

Address: 15 Galaxy Road, Linbro Business Park, Johannesburg, 2065, South Africa

This document is for informational purposes only. Specifications subject to change without notice.

