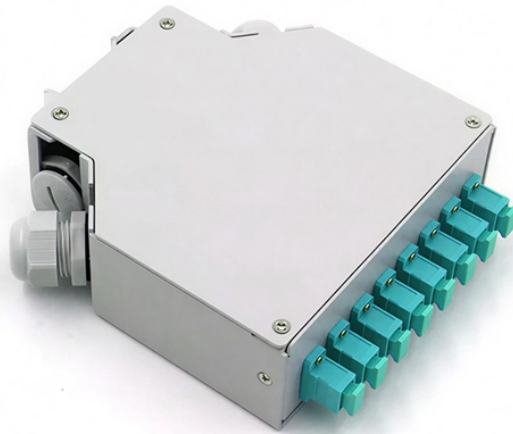


# 144-core optical fiber splicing flange



## 144-core optical fiber splicing flange



Weatherproof fiber optic splice closure up to 144 cores, made of high strength plastic, with excellent protection ability for fiber cable, the wholesale price, and quality assurance.



The 144 core dome splice closure is a compact, high-capacity outdoor fiber optic enclosure designed for optical fiber cable connections. It features 1 inlet and 10 outlet ports and can accommodate up to 9 ...



It adopts scientifically formulated engineering plastic and be shaped by injection molding, with anti-aging, anti-corrosion, flame retardant, waterproof, anti-vibration and anti-shock effects. Can effectively ...



Infinique Fiber Optic Splice Enclosure has been specifically designed to give greater protection for fiber optic connections. It is made of tough chemical resistant engineering material which effectively ...



May be used for cut, uncut and taut sheath applications. May be used for all fiber optic cable. Sheath retention & central strength member fasten system included.



The 144 cores dome type fiber optic splice closure come with 2 inlets and 4 outlets, which is including 6 splice trays, each accommodating 24 fibers. The fiber optic joint box body is crafted from reinforced ...



Dawnergy's In-line type fiber optic splice closure is a multifunctional fiber splice equipment which is designed for connection, branching and connection. This FOSC has 7 cable ports. It is suitable for ...



The FSO-144 splice only wall mount enclosures from Century Fiber Optics are designed for ease of use and security in any application requiring splicing or cables indoors, perfect for transition splices ...



Splice closure for optical fiber cable are essential for distributing, splicing, and storing outdoor optical cables. They support both direct and splitting connections, making them suitable for ...



The enclosure includes multiple cable entry ports for easy access and secure splicing, with a ribbed exterior for enhanced grip and stability during setup. Ideal for FTTH, telecom, and broadband ...

## Contact Us

For more information, pricing, or custom network solutions, please contact us:

Website: <https://www.hashherbcafe.co.za>

Email: [hello@hashherbcafe.co.za](mailto:hello@hashherbcafe.co.za)

Phone: +27 63 814 7295

Address: 15 Galaxy Road, Linbro Business Park, Johannesburg, 2065, South Africa

This document is for informational purposes only. Specifications subject to change without notice.

