

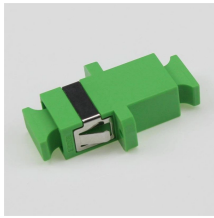
# 12-core single-mode fiber in CAD



## Overview

SPECIFICATIONSSPECIFICATIONSSearch by part number or description such as CAT5, CAT6, OSP, etc. Sort by any of the table headers. Use the drop down menu to filter by product category and type. Sort by any. NG4access ® Cabled Modules available in all module sizes and fiber counts up to 864 fibers NG4access ® Splice Tray Four sizes of interchangeable Propel fiber pass-through adapter packs provide the breadth of capabilities for virtually any configuration. Four sizes of interchangeable Propel fiber. Discover all CAD files of the "Optic fiber connectors" category from Supplier-Certified Catalogs □ SOLIDWORKS, Inventor, Creo, CATIA, Solid Edge, autoCAD, Revit and many more CAD software but also as STEP, STL, IGES, STL, DWG, DXF and more neutral CAD formats. Free 3D CAD models for download ✓ Search now in more than 6000 3D CAD catalogues ► Mechanical engineering, architecture (BIM), and much more. Corning ribbon plenum cables are designed for use in plenum, riser and general purpose environments for intrabuilding backbone installations and for high-fiber-count data centers. Specifications are correct at time of printing and subject to change or alteration.

## 12-core single-mode fiber in CAD



Explore CommScope's efficient and scalable fiber splice panels designed for seamless connectivity. Accommodating LC, SC, and MTP/MPO connectors, these panels are ideal for data centers, ...



SPECIFICATIONS.



Download CAD drawings for our Fiber and Copper products Search by part number or description such as CAT5, CAT6, OSP, etc. Sort by any of the table headers. Use the drop down menu to filter by ...



Corning ribbon plenum cables are designed for use in plenum, riser and general purpose environments for intrabuilding backbone installations and for high-fiber-count data centers. These cables consist of ...



12F, Single Mode, Armoured, Unitube 12 Core Single mode 9/125, Loose Tube jelly filled Cables, Unitube, Single Sheath - Outdoor Armoured Cable - ECCS-Corrugated, complying to 9/125 ITU G.652.



Specifications are correct at time of printing and subject to change or alteration without notice.



Corning ribbon plenum cables are designed for use in plenum, riser and general ...



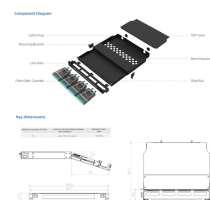
Free 3D CAD models for download Search now in more than 6000 3D CAD catalogues Mechanical engineering, architecture (BIM), and much more.



Discover all CAD files of the "Optic fiber connectors" category from Supplier-Certified Catalogs SOLIDWORKS, Inventor, Creo, CATIA, Solid Edge, autoCAD, Revit and many more CAD software ...



HES 12 Core Single Tube Steel Armored Fiber Optic Cable, SM 9/125 $\mu$  Single Mode. Provides high-capacity and durable data transmission.



After a PSP moisture barrier is applied around the cable core, this part of cable accompanied with the stranded wires as the supporting part are completed with a PE sheath to be a figure-8 structure. This ...

## Contact Us

For more information, pricing, or custom network solutions, please contact us:

Website: <https://www.hashherbcafe.co.za>

Email: [hello@hashherbcafe.co.za](mailto:hello@hashherbcafe.co.za)

Phone: +27 63 814 7295

Address: 15 Galaxy Road, Linbro Business Park, Johannesburg, 2065, South Africa

This document is for informational purposes only. Specifications subject to change without notice.

